




## Brightness Sensor

### User Manual

 Before you use the brightness sensor, please read this file first and save it for

We will struggle and serve for the booming development of LED industry!

Brightness Sensor

## Statement

Any companies or privates cannot copy, transcribe or translate part or whole content of this file without our written permission. And cannot use it on any business or benefit filed with any forms.

The specifications and information which are mentioned on the file is for reference only, if there' s update, we will not inform you. This file is only for guidance, and all information will not be for any promises.

# CATALOG

Guiding.....	2
Safety Notes.....	2
Functions.....	3
Size.....	4
Connection.....	5
Technical Specifications.....	6

## **Safety Notes**

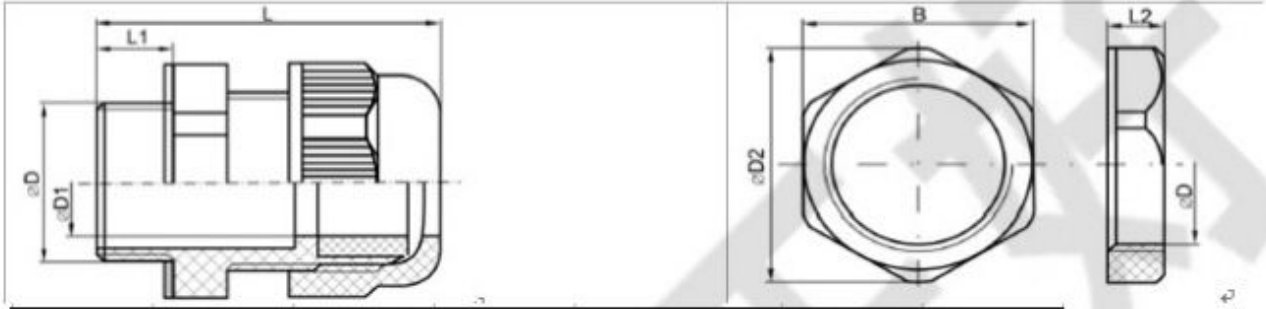
- ◆ Input voltage is 220V, voltage range is from 100V-240V, please make sure the quality of the power supply of OVP series.
- ◆ Please make sure that all the power supply cables are plugged off when you want to connect or plug off any signal or controlling cables.
- ◆ Please make sure that all the power supply cables and signal cables are plugged off when you need to put in or take off the hardware equipment.
- ◆ Please make sure the environment is clean, dry and ventilated when you use this product, also, do not put this product to a high temperature and wet environment.
- ◆ This product is electronic products, please keep away from fire, water source and flammable&combustible products.
- ◆ There' s high pressure components in this products, please do not open the box and repair it by yourself.
- ◆ Turn off the power supply immediately when you find smoking, peculiar smell or something unusual. And contact with us soon.

## Functions

- ◆ Simple construction and convenient to install;
- ◆ There are visible advantages for future multiple requirements;
- ◆ Easy to operate, no need training;
- ◆ Compatible with 5<sup>th</sup>, 6<sup>th</sup> generation controllers and VMF multi-function card;
- ◆ Detect the environment brightness in real time, as to adjust the brightness of LED screen automatically;
- ◆ Support all kinds of full color led screen;
- ◆ Standard with 1M cable, but user can extend it to 10M;
- ◆ Can be installed in outdoor, the quality is reliable;
- ◆ No need connect with power supply alone.

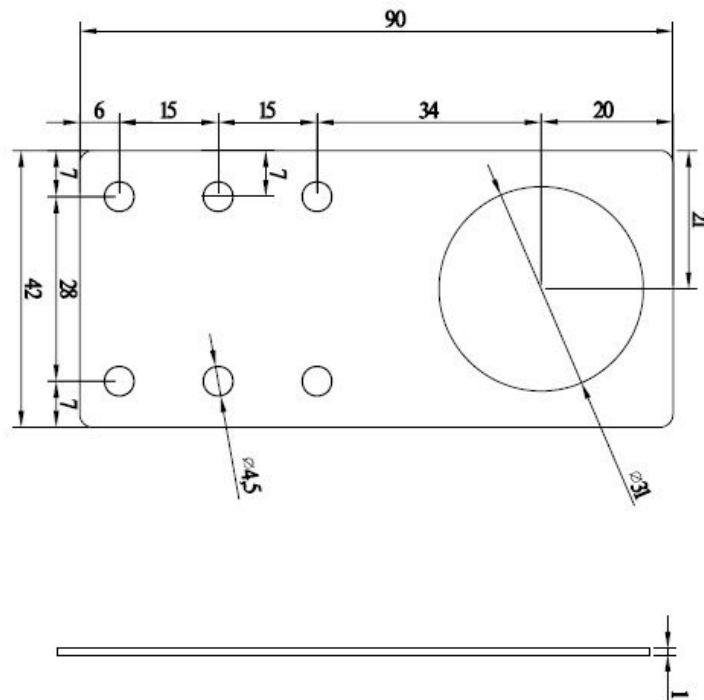
# Size

Sensor size:



规格	D(mm) ± 0.1	B(mm) ± 0.1	D2(mm) ± 0.1	L(mm) ± 0.1	L1(mm) ± 0.1	L2(mm) ± 0.1
PG25	29.9	35.9	38.9	44.6	11	7

Small board size:

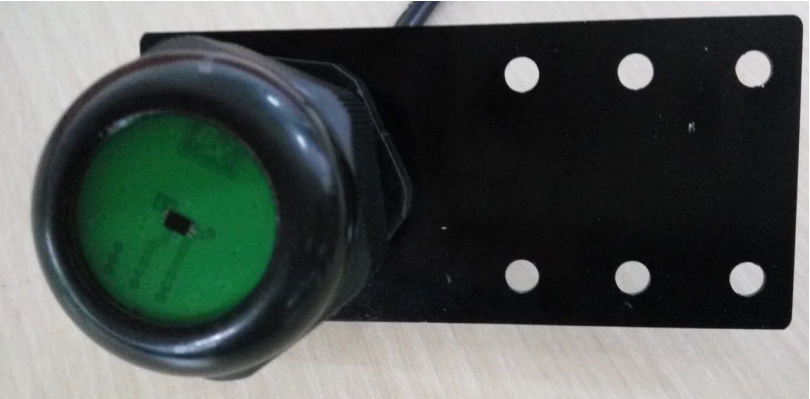


# Connection

Connection with BX-VMF:



Fix the sensor on the small board:



# Technical Specifications

1. Can detect the brightness of the around environment (can make a sense of the brightness direction).
2. The sensitivity is adjustable.
3. Working voltage: 3.3-5V
4. With bolt hole, it' s easy to install.



## Contact Us

### Shanghai ONBON Technology Co.,Ltd (Headquarters)

Address: 7 Floor, Tower 88, 1199#, North Qinzhou Road, Xuhui District, Shanghai City, China

Tel Phone: 086-21-64955136

Fax: 086-21-64955136

Website: [www.onbonbx.com](http://www.onbonbx.com)

### ONBON (Jiangsu) Optoelectronic Industrial Co.,LTD

Address: 1299#, Fuchun Jiang Road, Kunshan City, Jiangsu Province, China

### Sales Contacts

Tel: 0086-15921814956 0086-15800379719

Email: [onbon@onbonbx.com](mailto:onbon@onbonbx.com)

### Second Development

Tel: 0512-66589212

Email: [dev@onbonbx.com](mailto:dev@onbonbx.com)

### iLEDCloud

Website: <http://www.iledcloud.com/>



Public Wechat



ONBON APP