




LEDSHOWYQ Add Database

User Manual

 Before you use the brightness sensor,
please read this file first and save it for

We will struggle and serve for the booming development of LED industry!

LedshowYQ 2018 Add database

Statement

Any companies or privates cannot copy, transcribe or translate part or whole content of this file without our written permission. And cannot use it on any business or benefit filed with any forms.

The specifications and information which are mentioned on the file is for reference only, if there' s update, we will not inform you. This file is only for guidance, and all information will not be for any promises.

CATALOG

Brief Introduction.....	1
About Software.....	1
User Manual.....	2
Add database.....	2
Database property.....	3
Setup Database property.....	4
Contact Us.....	8

Brief Introduction

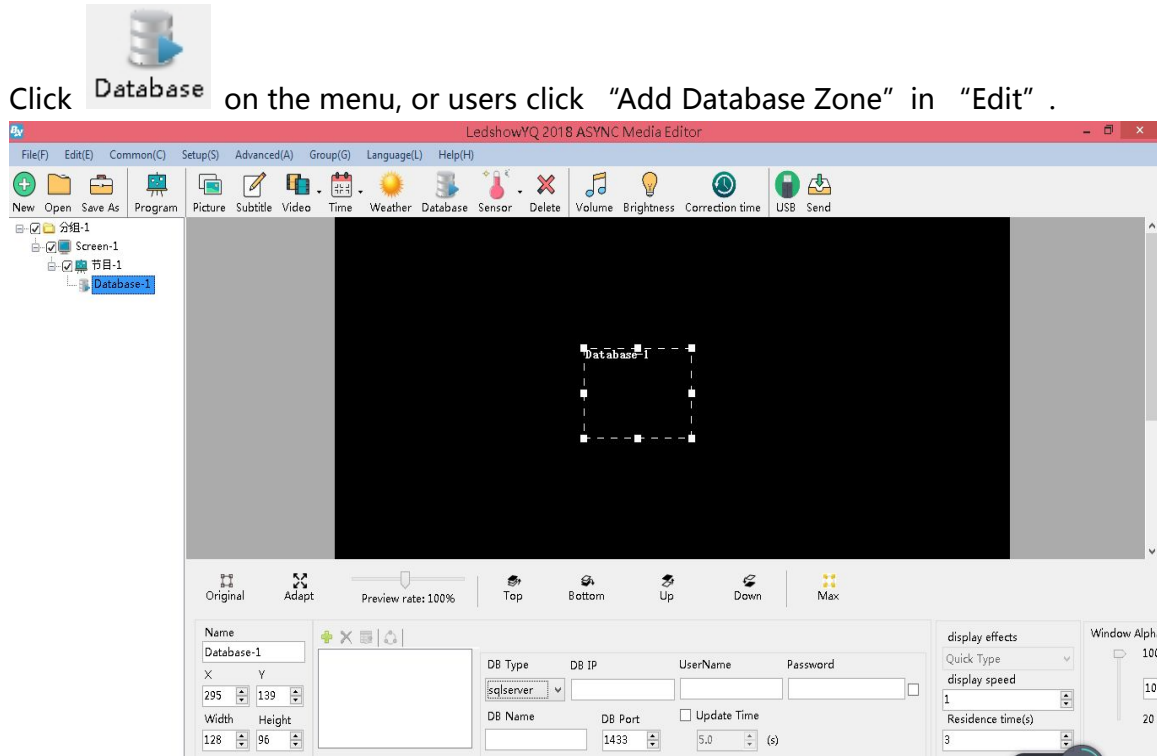
Thanks for purchasing LED control card. The design of the control card is according to the international and industrial standard, but if the operations are incorrect, it will probably bring you personal injury and financial harm. As to avoid these and win more from your equipment, please obey the specifications of this file.

About Software

Cannot do any modification, decompilation, disassembling, decoding or reverse engineering on our software, it' s illegal.


User Manual

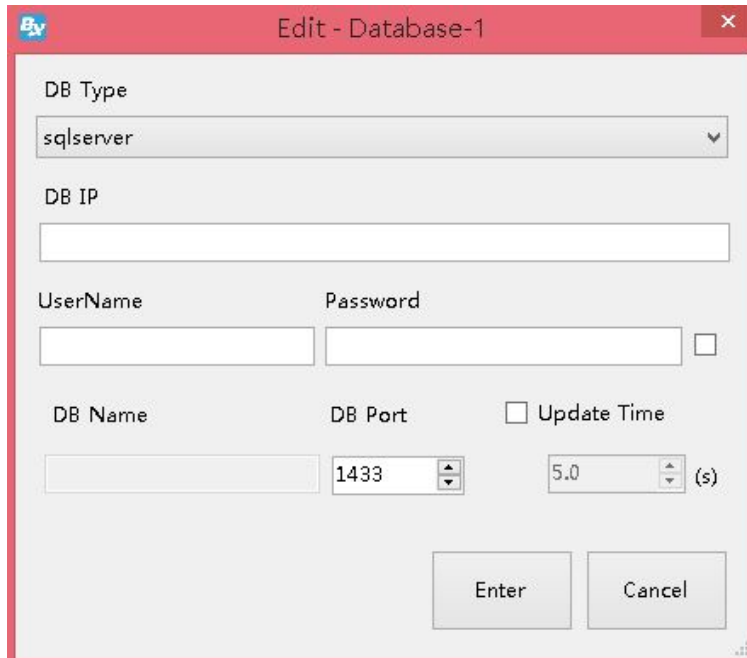
Add database



Picture 1 "Add database zone"


Database property

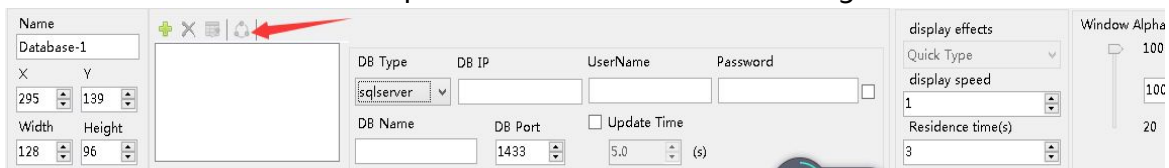
Click  icon -- select DB type, DB address, DB user name & passwords, DB name, DB port, Update time, etc. Then, click "Enter" .



Picture 2 Edit Database


Users can also set the parameters there, please check the below picture.

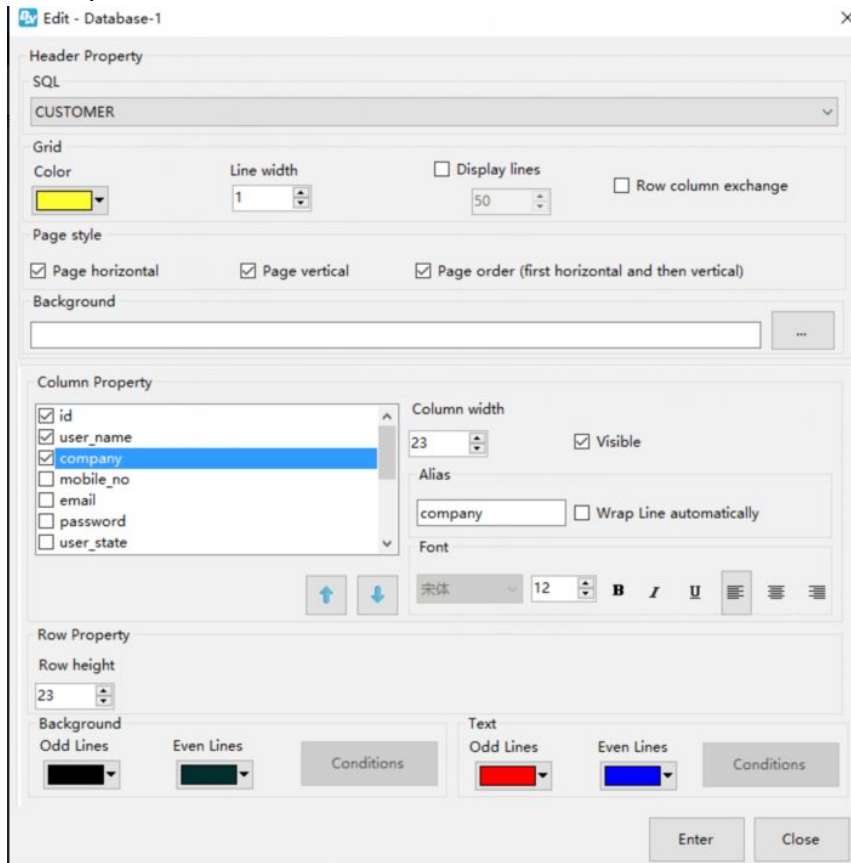
Firstly, select "sqlserver" , DB IP: 112.65.245.174, user name:sa , passwords: 123456, DB port: 1433, others, save as default. Like picture 2. After finish the settings, click .



Picture 3 Database property

Setup Database property

When connect with database successfully, click  , as to set the database grid, like picture 4: Users can edit the parameters. (Here, we connect a table which named CUSTOMER)

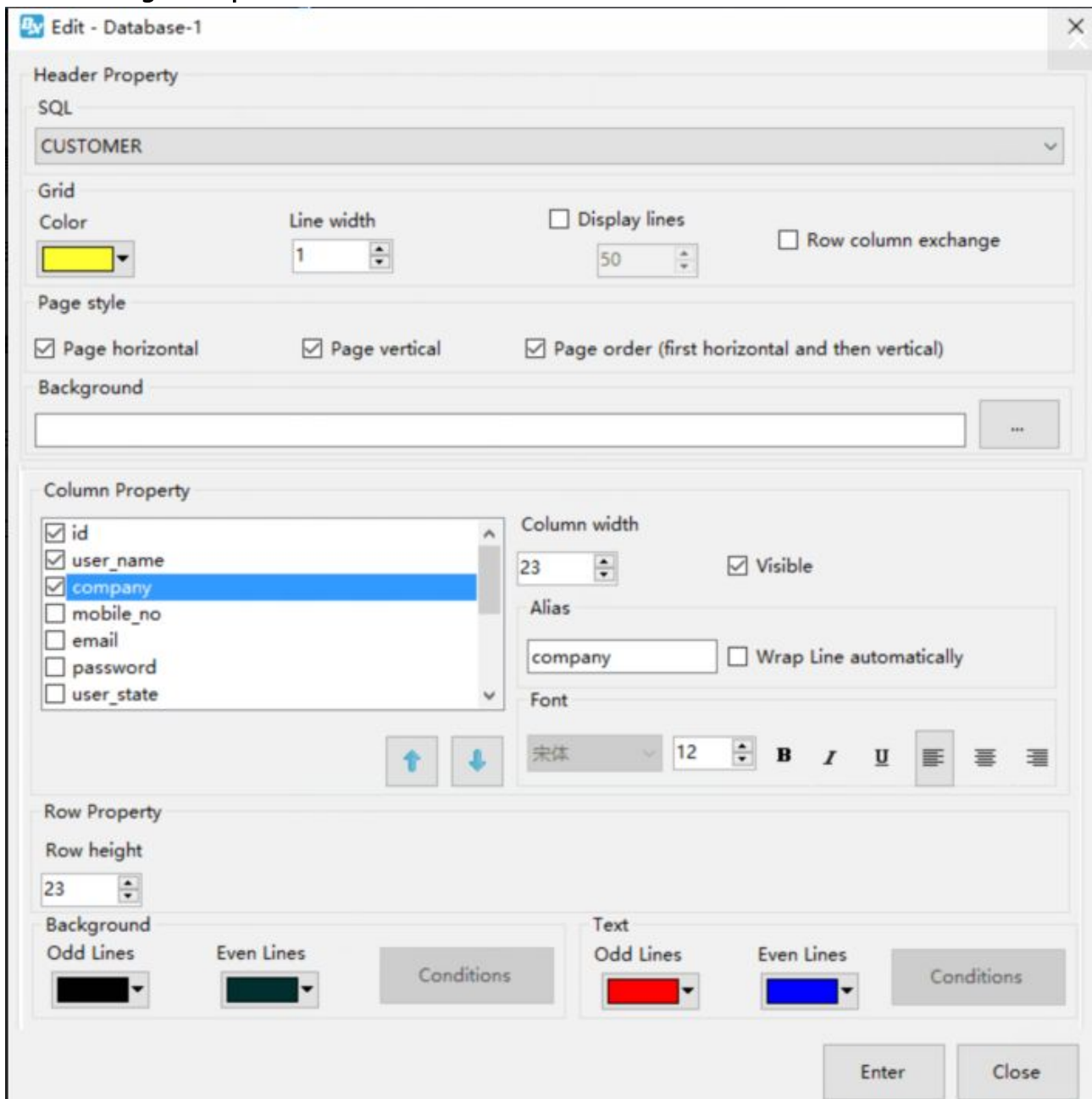


Picture 4 Database property

- SQL: Select CUSTOMER grid in the list of SQL.
- Grid color: set frame color. Here is default.
- Line width of Grid: set line width. Here is default.
- Column width: Here is default.
- Display lines: Here is default.
- Background: Users can select any picture in your PC as the background.
- Column Property: Users can select "column property" , here we select the first three column name.
- Wrap line automatically: if you select, the database grid will wrap line according to the size of grid and contents.
- Font size: Here is default.
- Bold: Here is default.

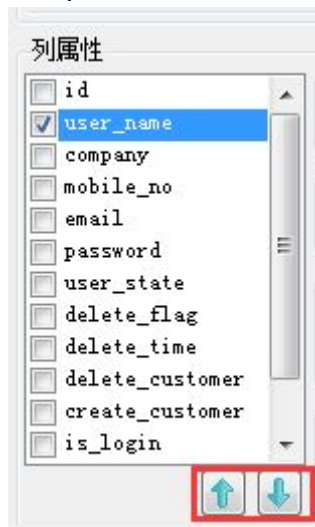
- Italic: Here is default.
- Underline: Here is default.
- Left alignment/align center/Right alignment: Here is default.
- Background color: Here is default.
- Font color: Here, please select red color for odd, blue for even.

After settings, like picture 5.



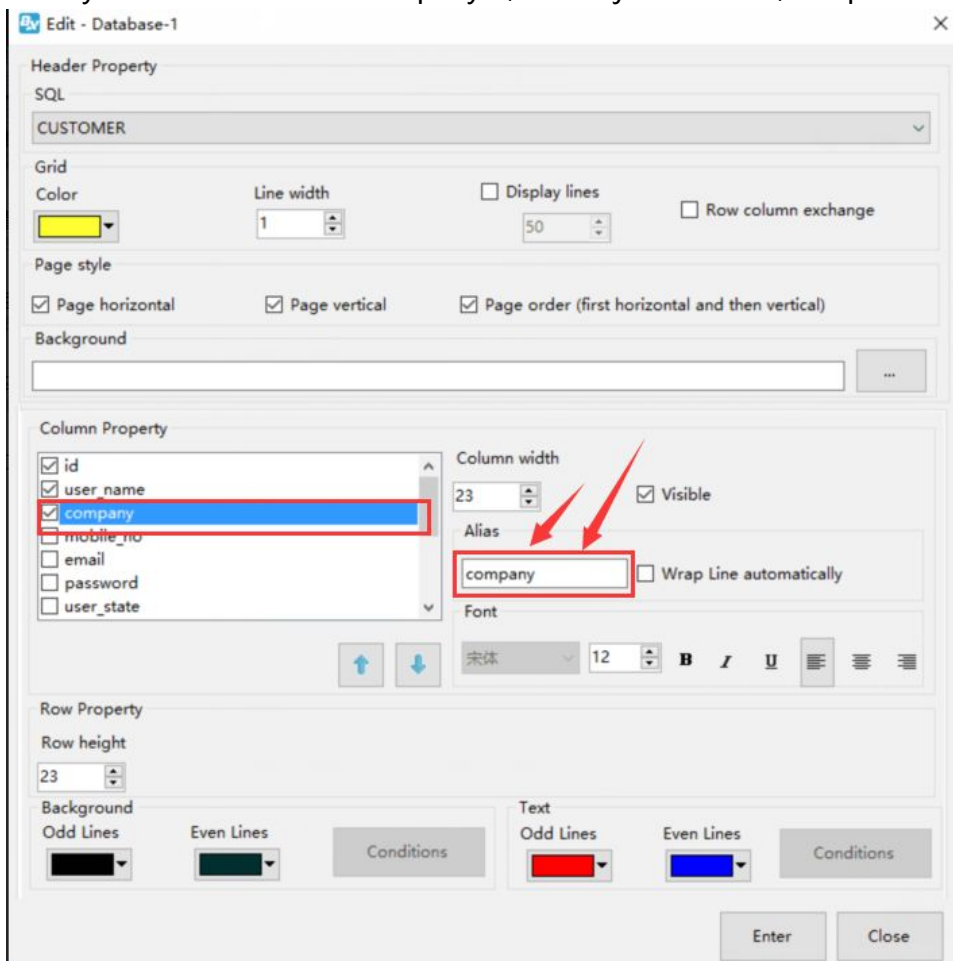
Picture 5

Users can also adjust the display orders, please check below, adjust by arrows, like picture 6.



Picture 6

Users can modify the name: select "company", and adjust on Alias, like picture 7:



Picture 7 Modify Alias

After settings, click "send" , the led screen will show the database table.



	user_name	company	mobile_no
368	1189189189	南昌海神	13732957988
369	tzchending	CDtech.co	13958671810
370	libin7758	临沂办事处李彬	18869898859
371	mingshudianzi	德州天星电子科	0534-3288608
372	sergei	555522qw	555522qw
373	NYPDZ	南阳市壹品电子	15537710111
374	danpusen	丹普森光电	15986769296
375	aabb	济南	
376	wfsflcpfxzx	潍坊市福利彩票	0536-2600209
377	wffczx	潍坊市福利彩票	0536-2600209
378	abba	内蒙	
379	000000	齐翼	15653603301
380	417730819	郑州办	13525519293
381	guzong123456	山西捷顺科贸有	7234691

Picture 8

Contact Us

Shanghai ONBON Technology Co.,ltd (Headquarters)

Address: 7 Floor, Tower 88, 1199#, North Qinzhou Road, Xuhui District, Shanghai City, China

Tel Phone: 086-21-64955136

Fax: 086-21-64955136

Website: www.onbonbx.com

ONBON (Jiangsu) Optoelectronic Industrial Co.,LTD

Address: 1299#, Fuchun Jiang Road, Kunshan City, Jiangsu Province, China

Sales Contacts

Tel: 0086-15921814956 0086-15800379719

Email: onbon@onbonbx.com

Second Development

Tel: 0512-66589212

Email: dev@onbonbx.com

iLEDCloud

Website: <http://www.iledcloud.com/>



Public Wechat



ONBON APP