

LED Multi-media player

User manual



Before you use the LED controller, please read this file first and save it for future.

BX-Y08

STATEMENT

Any companies or privates cannot copy, transcribe or translate part or whole content of this file without our written permission. And cannot use it on any business or benefit filed with any forms.

The specifications and information which are mentioned on the file is for reference only, if there' s update, we will not inform you. This file is only for guidance, and all information will not be for any promises.

CATALOG

Brief Introduction.....	1
Instructions.....	1
INTERFACE PORT.....	2
BX-Y08 interface instructions.....	2
Hardware Diagram.....	3
Steps.....	4
Add screen.....	4
IP Configuration.....	6
Set screen parameters.....	8
WIFI configuration.....	11
Scan Configuration.....	13
Reset screen parameters.....	19
Check the screen state.....	20
MAC configuration.....	21
Server /WEB communication configuration.....	22
Install the FTP server.....	23
Set controller IP information.....	34
Controller connect to the wireless route.....	37
ADD PROGRAMS.....	40
Add program.....	40
Add picture zone.....	41

Finish edit program.....	42
Play program.....	42
Firmware maintenance.....	43
Firmware maintenance.....	43
COMMON FUNCTION.....	45
Time correction.....	45
Brightness.....	45
Volume.....	47
ADVANCED.....	48
Bulletin management.....	48
Logo Configuration.....	50
Screen debug.....	51
Set IP display flag.....	51
Set APN.....	52

Brief Introduction

Thanks for ordering LED control card. The design of the control card is according to the international and industrial standard, but if the operations are incorrect, it will probably bring you personal injury and financial harm. As to avoid these and win more from your equipment, please obey the specifications of this file.

Instructions

The BX-Y08 supports high refresh and takes perfect photos. When users use the camera or mobile phone to take pictures of the LED screen, the picture will not be distorted. The communication mode of the controller is very rich, and it is equipped with a 100-megabyte network interface, which supports the external WIFI module of the USB interface, and the external 4G router will be installed in the future.

The controller provides rich of control and management software platforms, including PC software LedshowYQ and cloud platform iLEDCloud (will support in the near future). PC software LedshowYQ runs on the PC of the user's screen manager, and supports Windows XP, win7, win10 and other mainstream operating systems. This software provides a comprehensive, rich controller configuration, programming, program sending function.

Products support rich of area types, including graphics and text, subtitles, video, lunar calendar, dial, timing, temperature, humidity, bulletin, weather forecast. The upcoming addition database area feature, which can connect to MySQL, sqlserver and other format databases, can be displayed on multiple pages. This function is very suitable for high-speed railway, hospitals, Banks and other places that need to release updated information in real time.

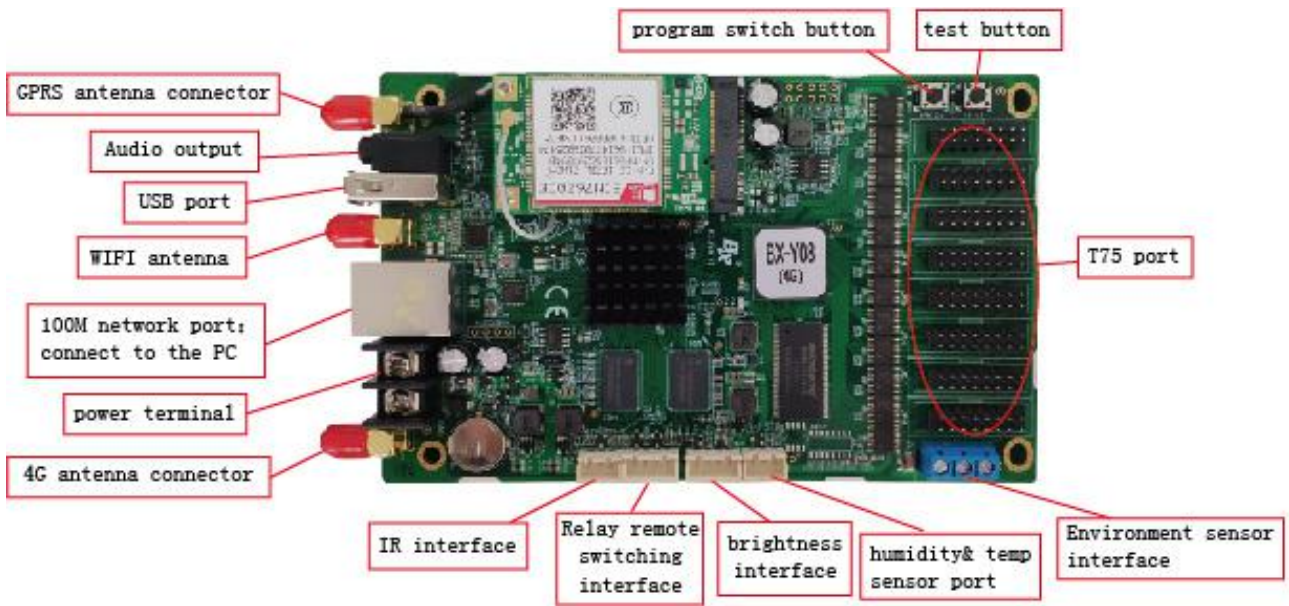
The Y series products will also be added to support the control and management of mobile android APP, which is easy to learn and understand. Users can work wirelessly via mobile phones and tablets, easily edit programs and send data anywhere and anytime. The APP supports searching and adding screen, multi-language, dynamic preview and video transcoding. Support gestures to zoom in and out of the partition function.

The product will also be designed to collect common sensor data such as temperature, humidity, brightness and noise by connecting VMF multi-function cards. Or external temperature, humidity, brightness sensor and environmental monitoring sensor can accurately measure and display temperature, humidity, brightness, noise, PM2.5, PM10, wind direction and wind speed. Provide accurate data reference for customers in places requiring strict control of temperature, humidity or noise to avoid unnecessary loss caused by improper control of temperature, humidity or noise. Combined with the new interface of environmental monitoring sensor, various environmental data can be visualized by using the sensor equipment of environmental detection, which is widely used in the construction of smart cities.

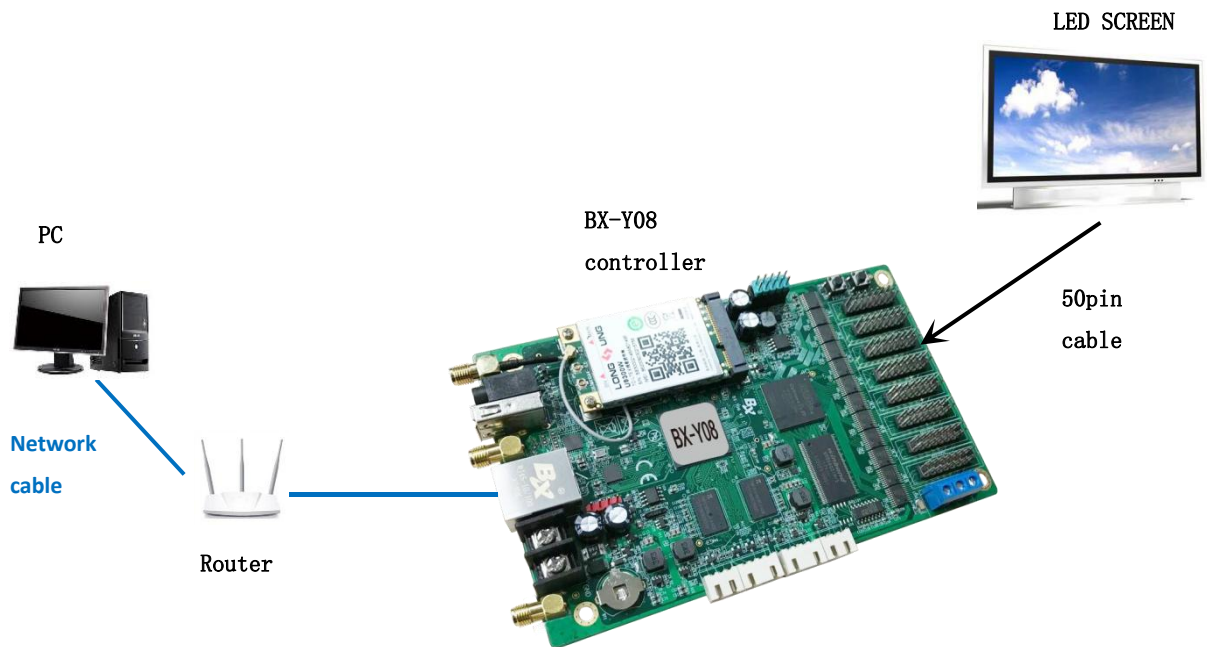
INTERFACE PORT

BX-Y08 interface instructions

BX-Y08 support external WIFI, support 1 nos of AUDIO output.




Hardware Diagram

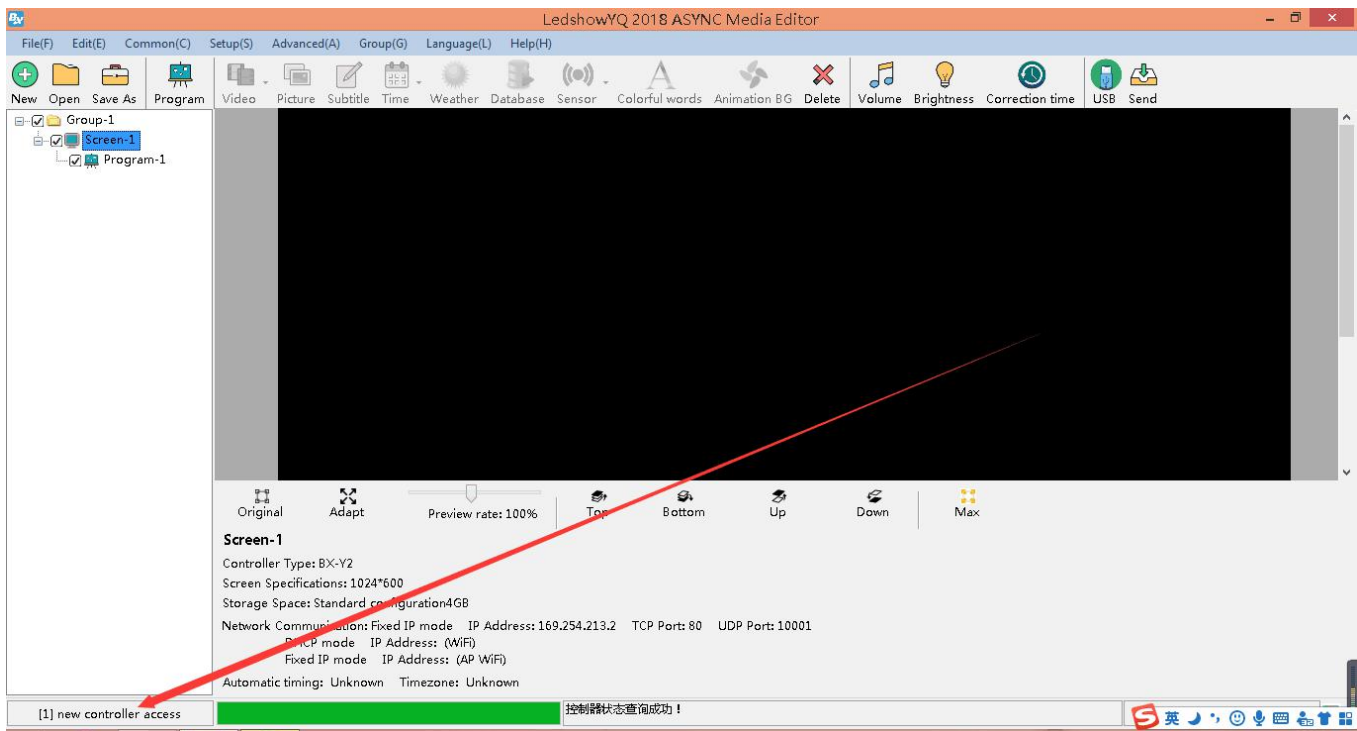


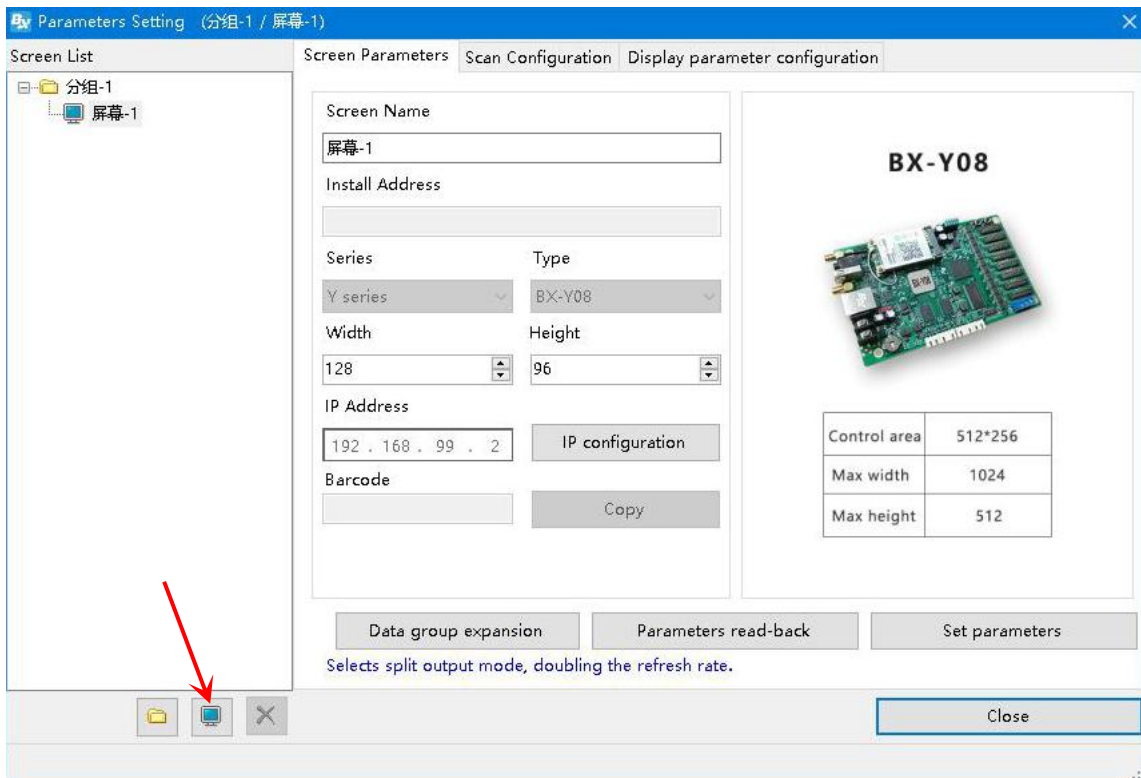
Steps

This is fast guide to know about Y08 ,For more functions,pls check 《LedshowYQ 2018 user manual》

Add screen


1. Open “LedshowYQ 2018” , after connect the controller then will prompt “new controller access” then click here to add screen or users can click the  to add screen

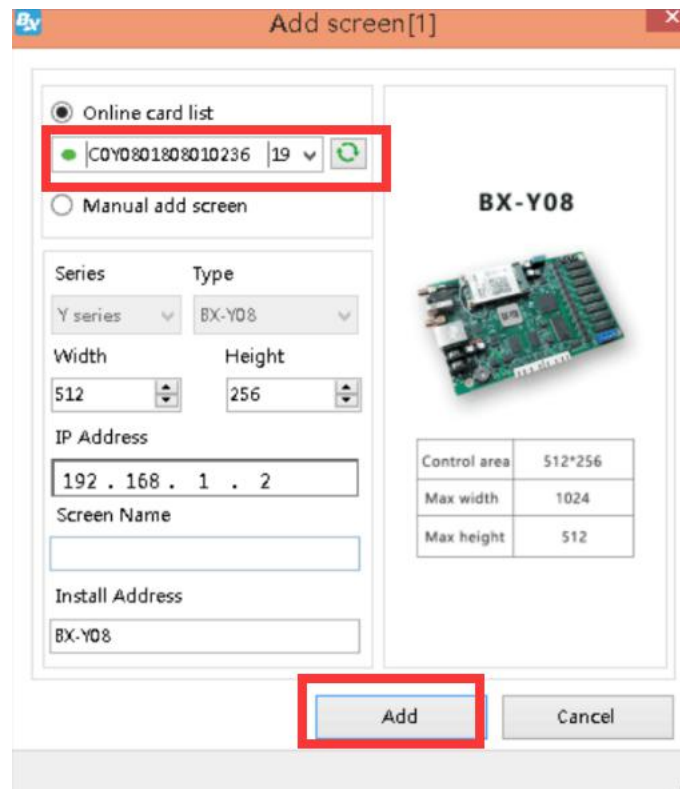




2. User can There is two mode to add screen --manual to add screen and online add screen.

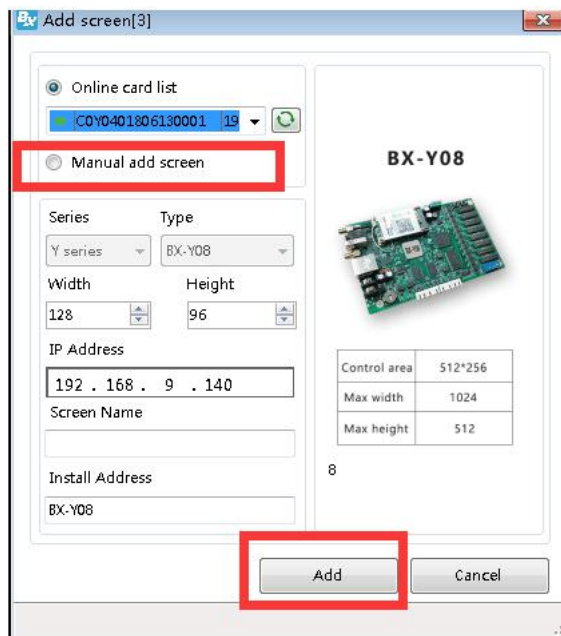
◆ **Online add screen**

Open LedshowYQ 2018 software, click the controller list update icon , then select the controller online to bind screen ,then click the add will be ok



◆ **Manual to add screen**

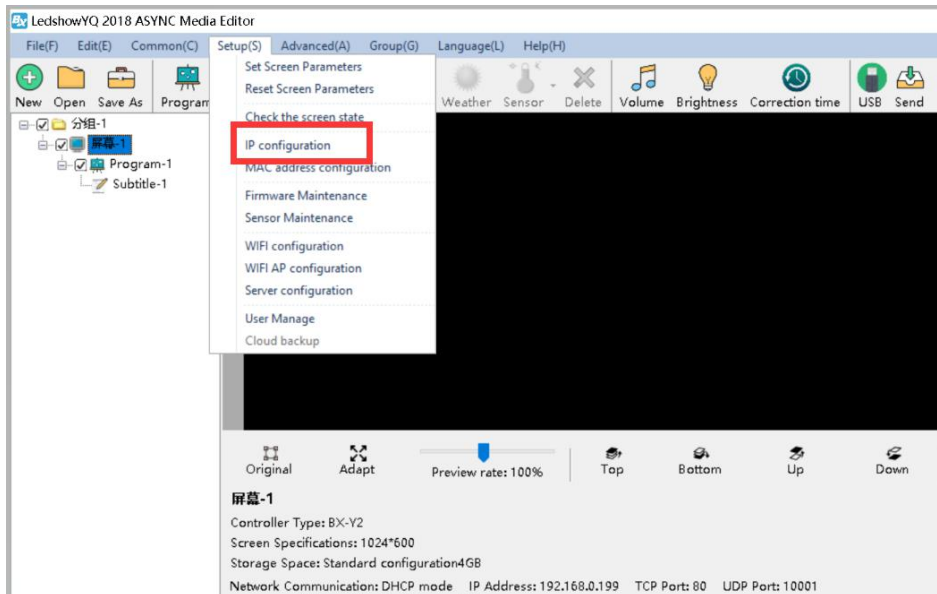
Pls add " manual add screen " and then select the controller type ,input the IP address then click "add" to add screen offline.



IP Configuration

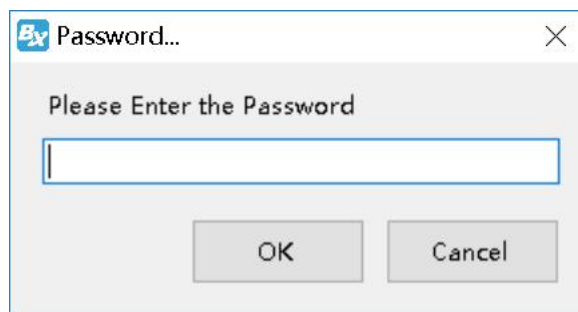
Step 1

Click the setup then "IP configuration" as shown in picture:



Step 2

Input "888" and click "OK"



Step 3

In the "IP configuration" interface, select the IP obtain mode, then fill the IP information, then click "settings" as shown in the picture :

IP configuration (分组-1 / 屏幕-1)

Online card list

Automatically obtain IP address

Use the following IP address :

IP Address: 192 . 192 . 192 . 192

Subnet Mask: 192 . 192 . 192 . 192

Gateway: 192 . 192 . 192 . 192

DNS: 192 . 192 . 192 . 192

Port: 5005

Install Address:

Web Server

Server IP Address: 139 . 196 . 231 . 196

Server Port: 3800

FTP server IP address: 139 . 196 . 231 . 196

FTP server port: 2121

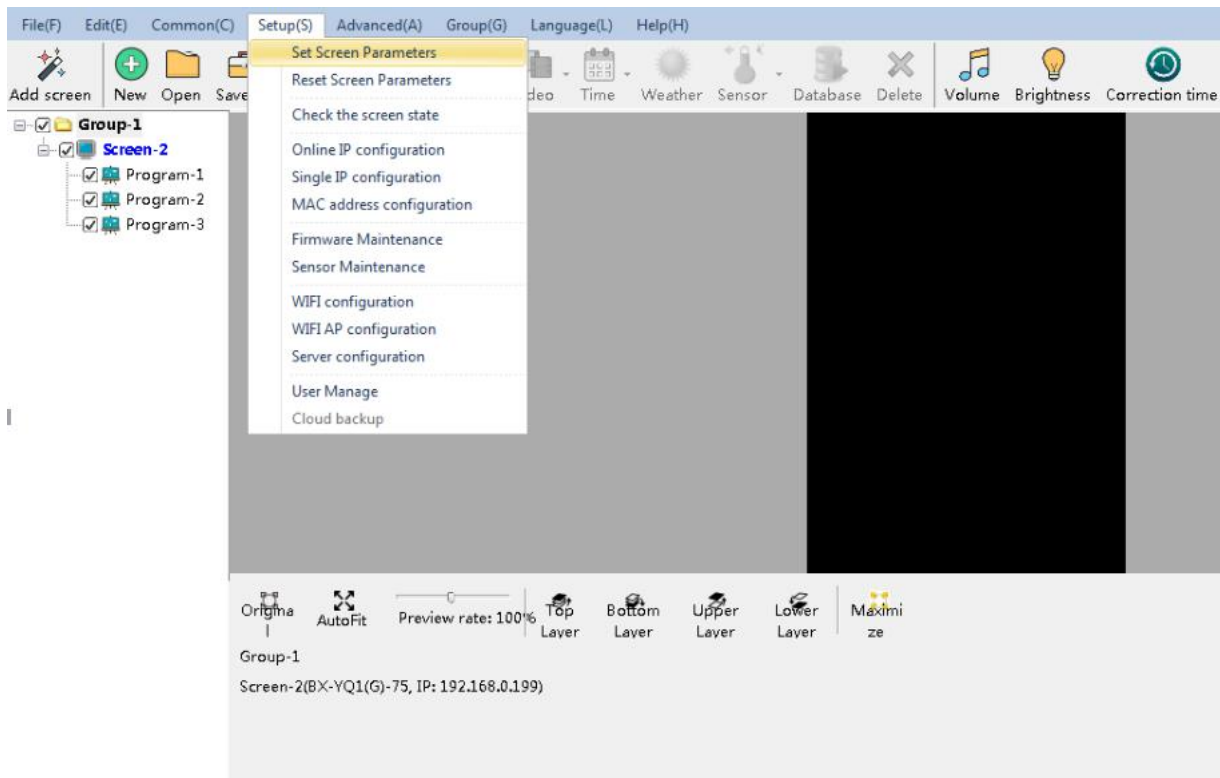
UserName:

Settings Close

Set screen parameters

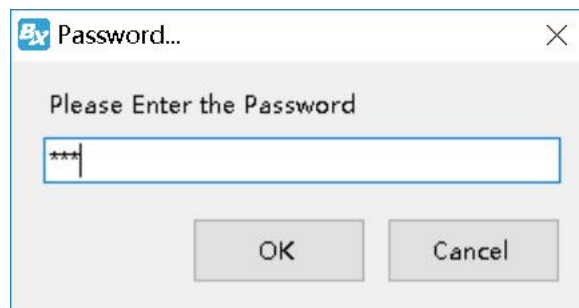
Step 1

Click "setup" --" set screen parameters" as shown in picture:



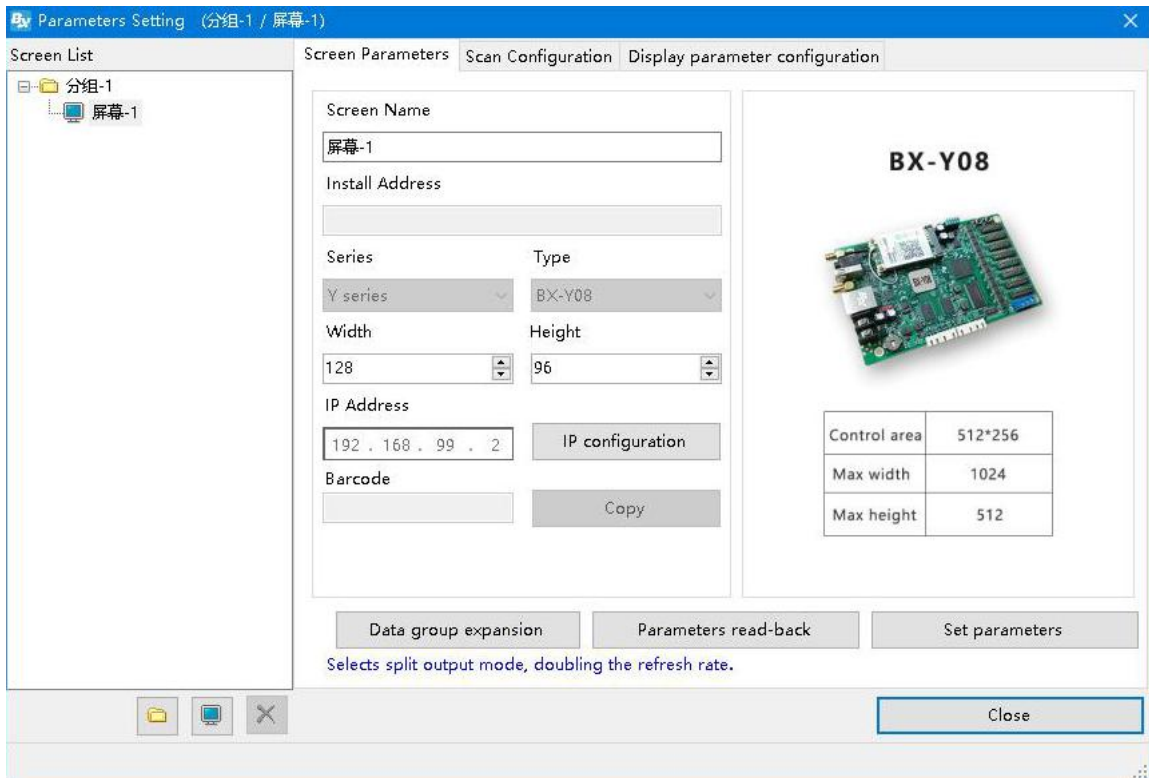
Step 2

Input password "888", then click "OK" as shown in picture :



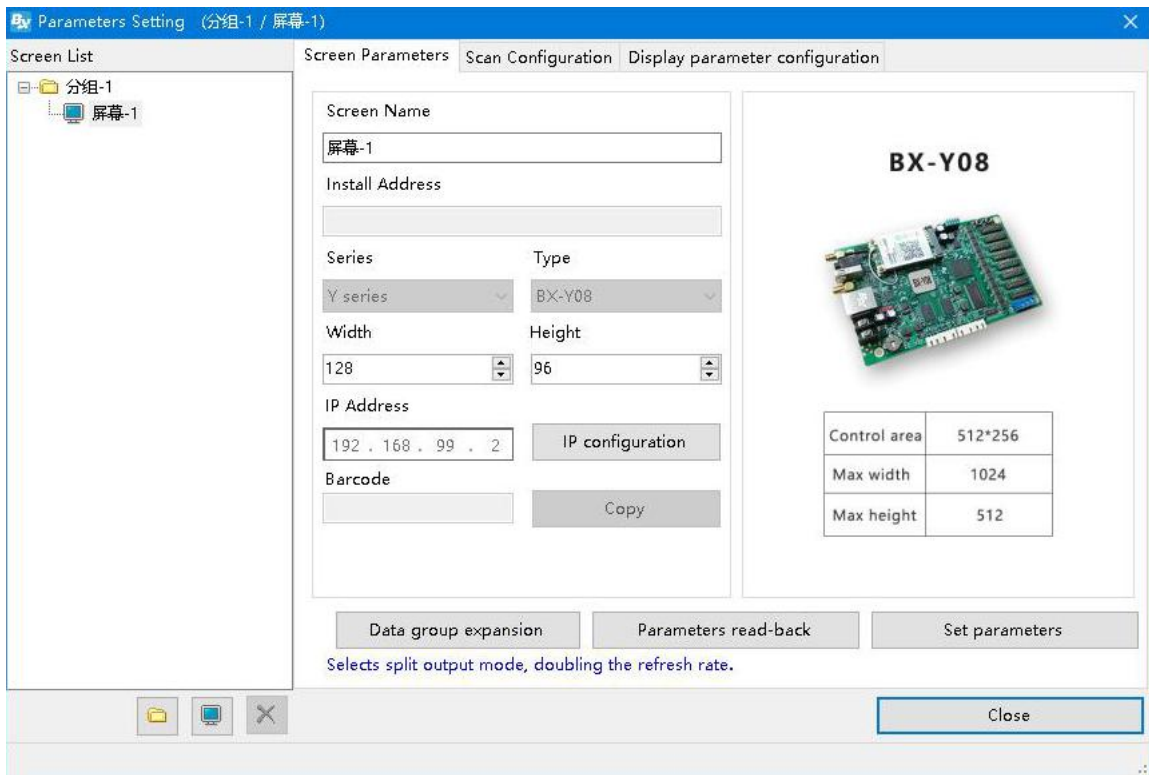
Step 3

In the screen parameters setup interface, select the controller model and screen height and width according to the screen parameters, as shown in picture :



Step 4

Click "set parameters" will be OK, as shown in picture :



WIFI configuration

Y series controller support two WIFI mode:AP mode and SAT mode,no need to connect with cable ,easy to use (if computer can't support wireless network card ,pls prepare one USB wireless network card)

1. AP mode (controller as hot spot,connect the computer to the controller WIFI)

Step 1

Open computer network connection,controller hot spot name will be default as the controller bar code ,click the" connection" as shown in picture :



Step 2

Input network security secret key ,the original password is: 12345678, then click "next step",the computer will connect with the Y controller WIFI, as shown in picture



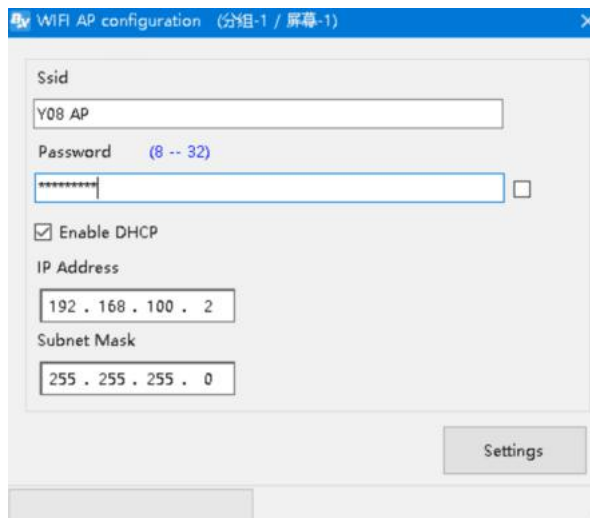
Step 3

Computer connect with the controller WIFI hot spot ,then click the LedshowYQ 2018 to add

screen ,edit program and sending program etc.



Step 4

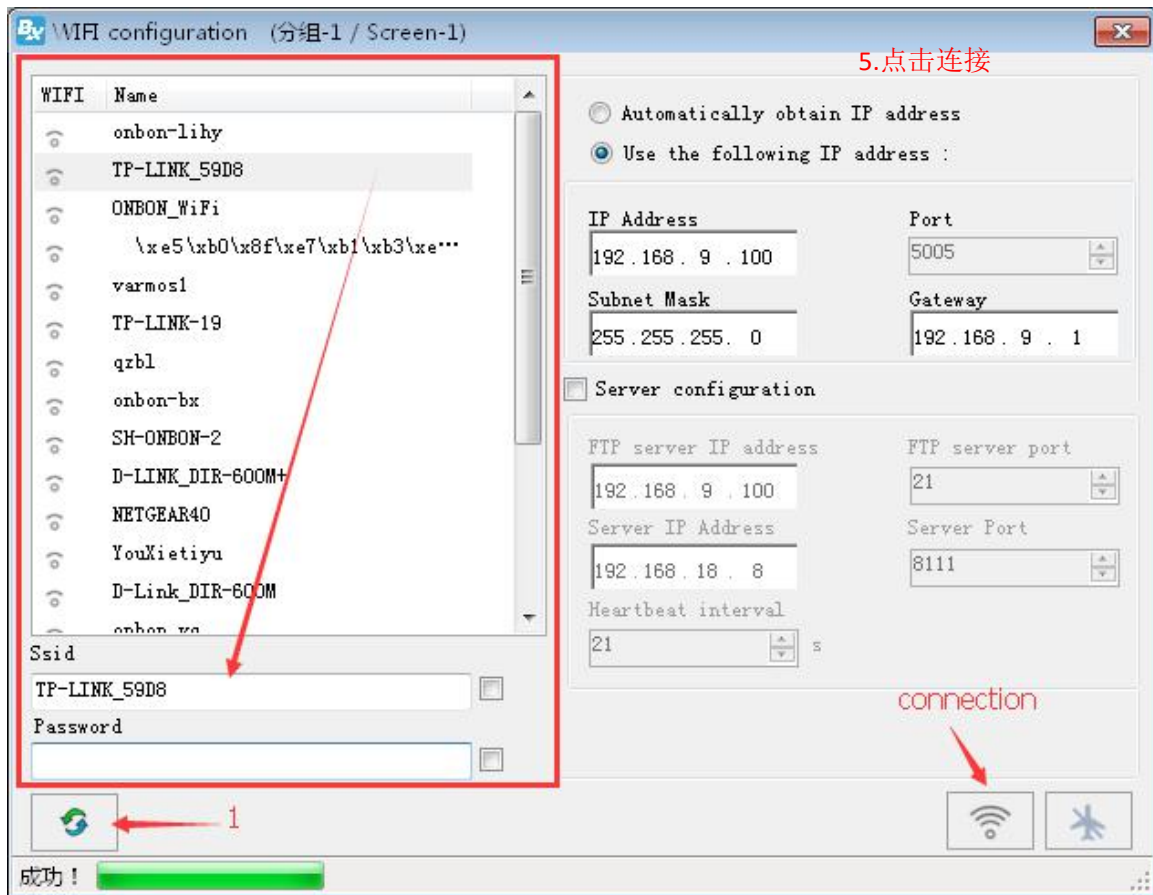
User can modify the hot spot name and password if not easy to remember the default hot spot name. In the "setup" --" WIFI AP configuration" Input password" 888" ,then input the new WIFI name and password, other keep default,then click "settings" will be OK. As shown in picture (notice: the hot spot name must be English, password only support numbers ,letters, the length should be 8-32 numbers.)



2. STA mode (controller connect to the WIFI network)

Step 1

In the menu ,select the "setup" ---" WIFI configuration" ,input password "888" ,then click the ICON"  " ,After seconds the WIFI name will display in the WIFI list ,connect the WIFI name and input password ,then select "" automatically obtain the IP address" or manual obtain IP Address,then click the  to connect with the WIFI.

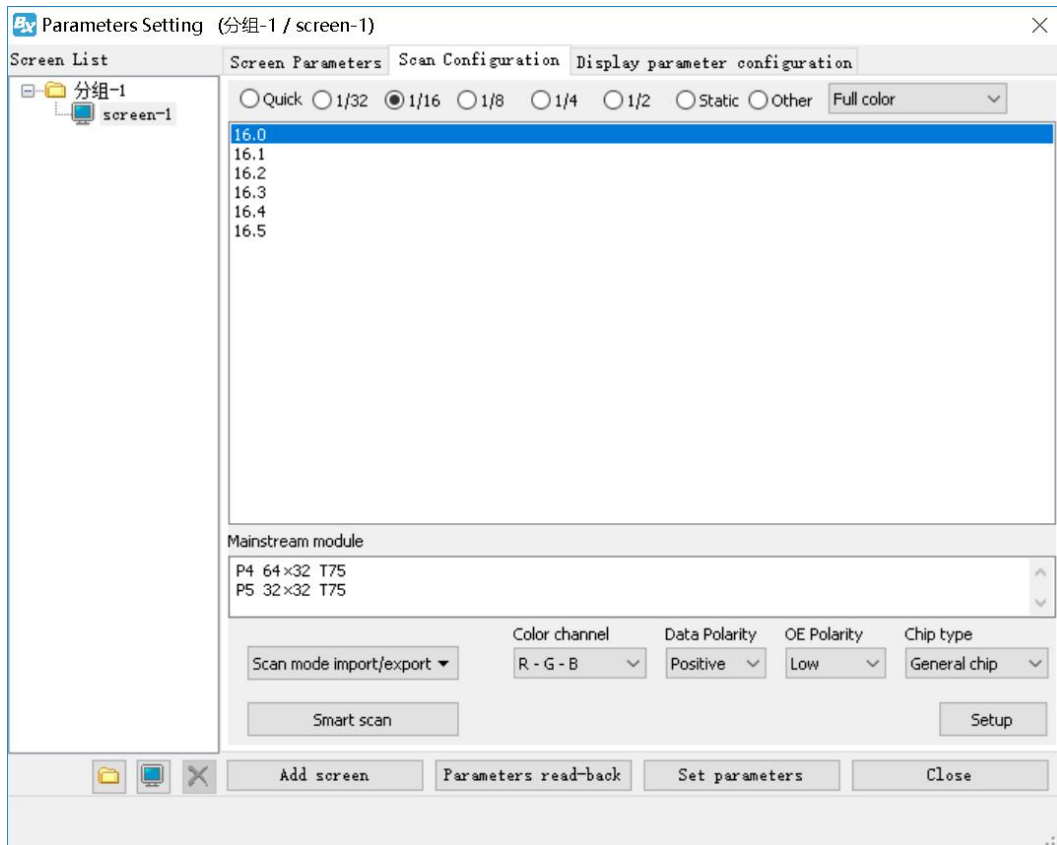


Step 2

After successfully connect ,remove the Y controller network cable ,connect the computer with the wireless router ,network cable connect or WIFI connect both is ok.then the LedshowYQ 2018 will communicate with the YQ controller correctly.

Scan Configuration

In the “set screen parameters”--click “scan configuration” option ,then go to the scan configuration interface,as shown in picture , user can set “scan mode””color channel””data polarity””OE polarity””chip model””smart scan configuration” and “scan mode export/import”.



1. Cascade direction:

From left to right, from right to left ,from up to down ,from down to up ,four mode of cascade direction.

2. Basic scan mode option:

- ◆ Scan mode: select the quick、 1/32、 1/16、 1/8、 1/4、 1/2、 static and other mode .indoor dual color usually is 1/16, indoor full color usually is 1/8 , outdoor dual color normally is 1/8,outdoor full color normally is static scan mode.
- ◆ Screen : can select the full color ,single/dual color
- ◆ Color channel: select the R-G-B、 R-B-G、 G-R-B、 G-B-R、 B-R-G、 B-G-R。
- ◆ Data polarity: positive and negative polarity, if select the negative ,the screen will display anti-white.
- ◆ OE polarity: high polarity and low polarity.
- ◆ Chip model: LED driver chip ,default is common chip,user also can select the specified chip model.

3. Smart scan configuration

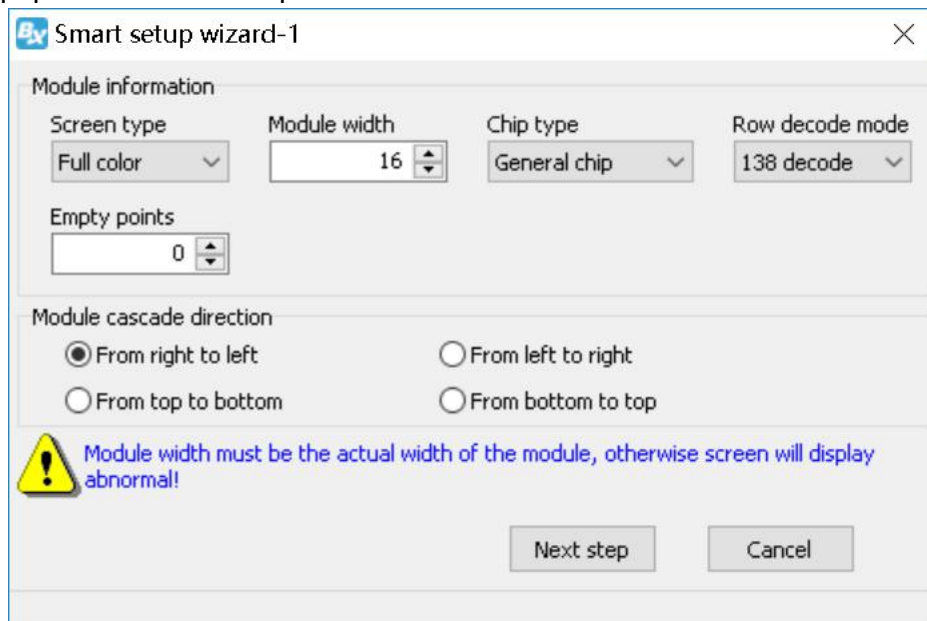
User can use smart scan configuration to set the scan mode if don' t know which one is suitable for the module.

Step 1

Click "smart scan configuration" --" smart setup wizard-1" to set the parameters.

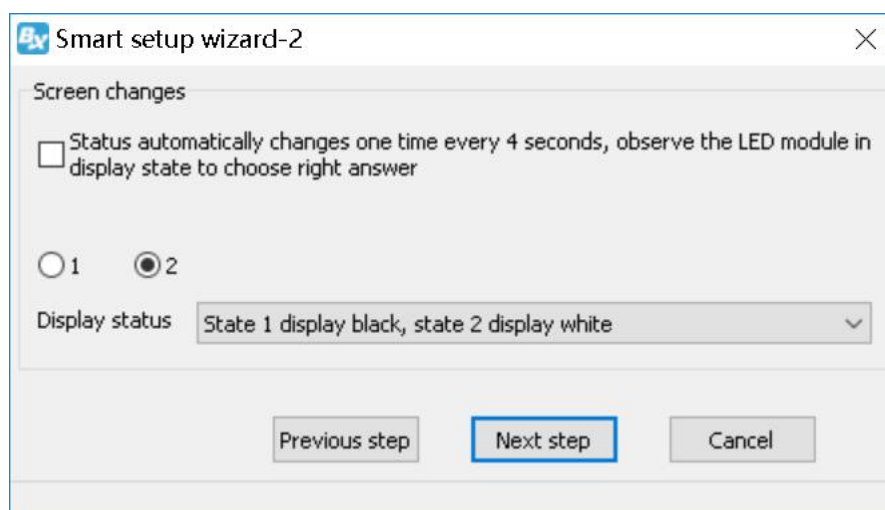
- ◆ Screen type: single color dual color and full color
- ◆ Module width: user can input the module width according to the LED screen total pixel for one line
- ◆ Chip type: default is general chip ,also can specified the LED screen chip.
- ◆ Row decode mode: including no decode, 138 decode,74HC595 decode and RT5958 decode , usually select138 decode.
- ◆ Empty points: when use empty points ,can input the empty points numbers.
- ◆ Module cascade direction:receiving card connection direction :from right to left ,from left to right,from top to bottom,from bottom to top.

After setup, pls click “next step”



Step 2

In the “smart setup wizard-2” to set the parameters as shown in the picture.

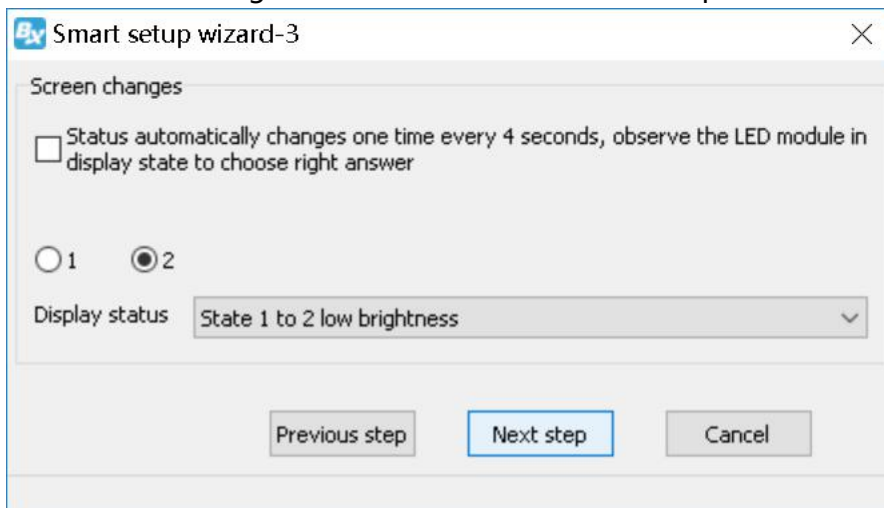


Click “1” ,check the LED screen display black or white ,then click the “2” ,then check the screen is black or white,if user want to check the screen variation ,can select the “staus

automatically changes one time every 4 seconds ,observe the LED module in display state to choose right answer " then click "next step"

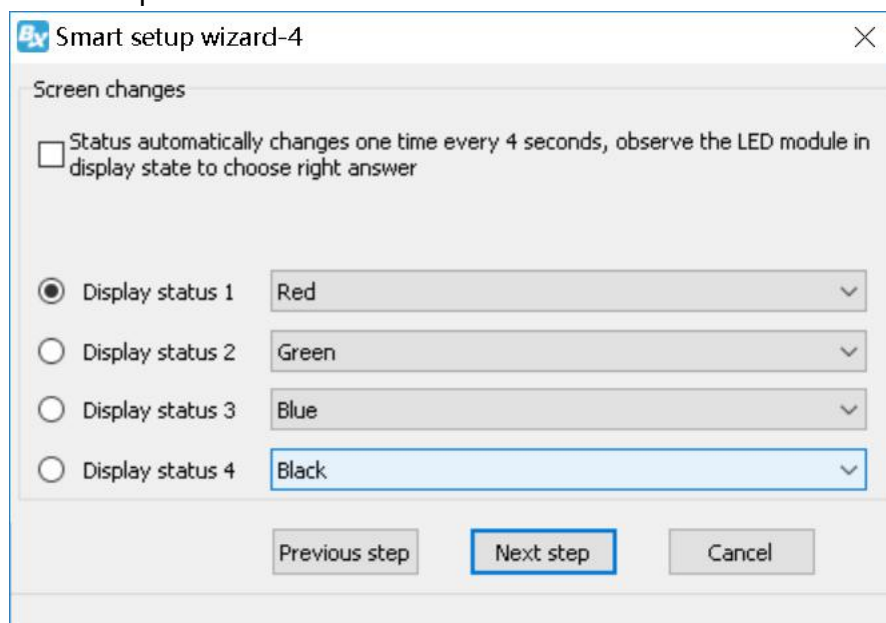
Step 3

Click "1" ,check the LED screen display black or white ,then click the "2" ,then check the screen is black or white,if user want to check the screen variation ,can select the "staus automatically changes one time every 4 seconds ,observe the LED module in display state to choose right answer " then click "next step"



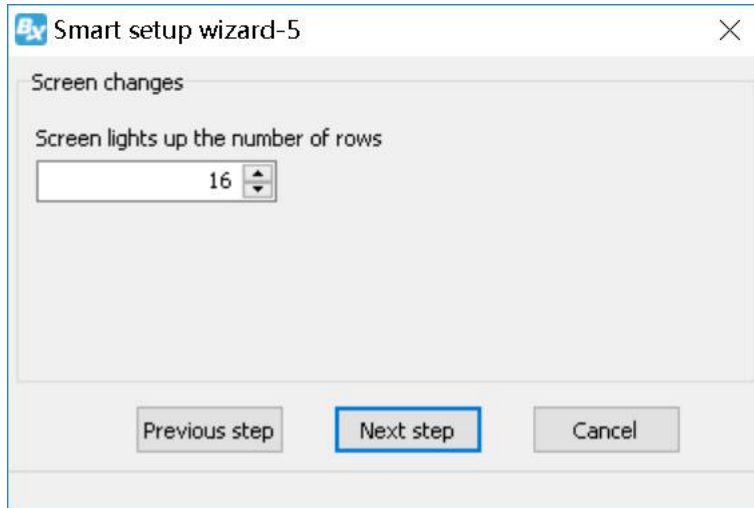
Step 4

Click "1" ,check the LED screen color ,then click the "2" to check the screen color,if user want to check the screen variation ,can select the "status automatically changes one time every 4 seconds ,observe the LED module in display state to choose right answer " then click "next step"



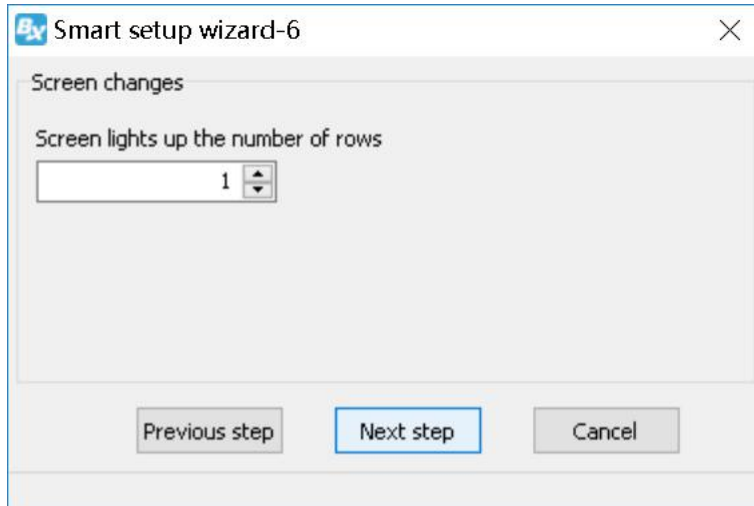
Step 5

Set the lights up number of rows ,then click the "next step"



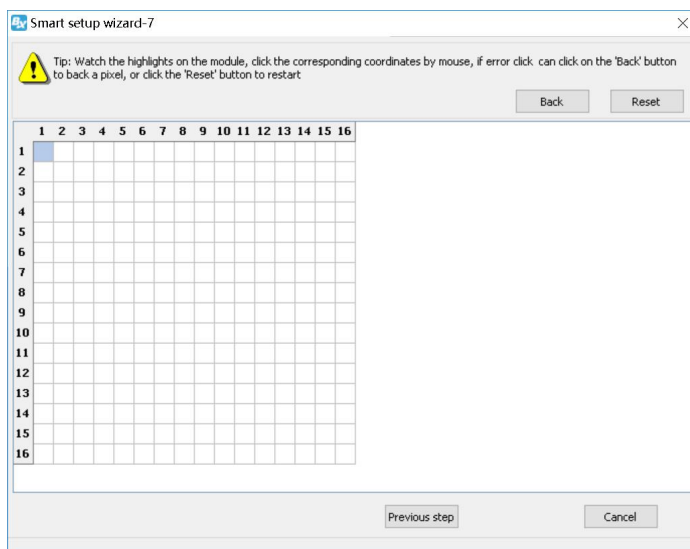
Step 6

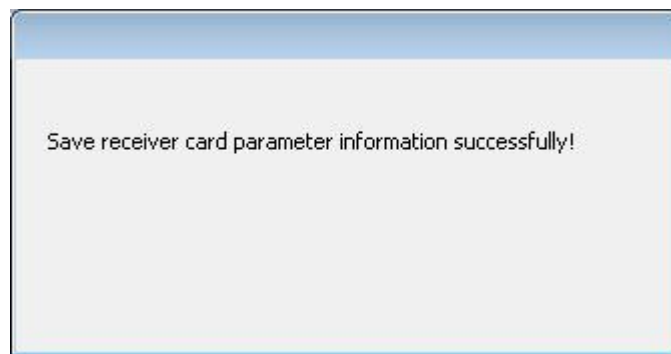
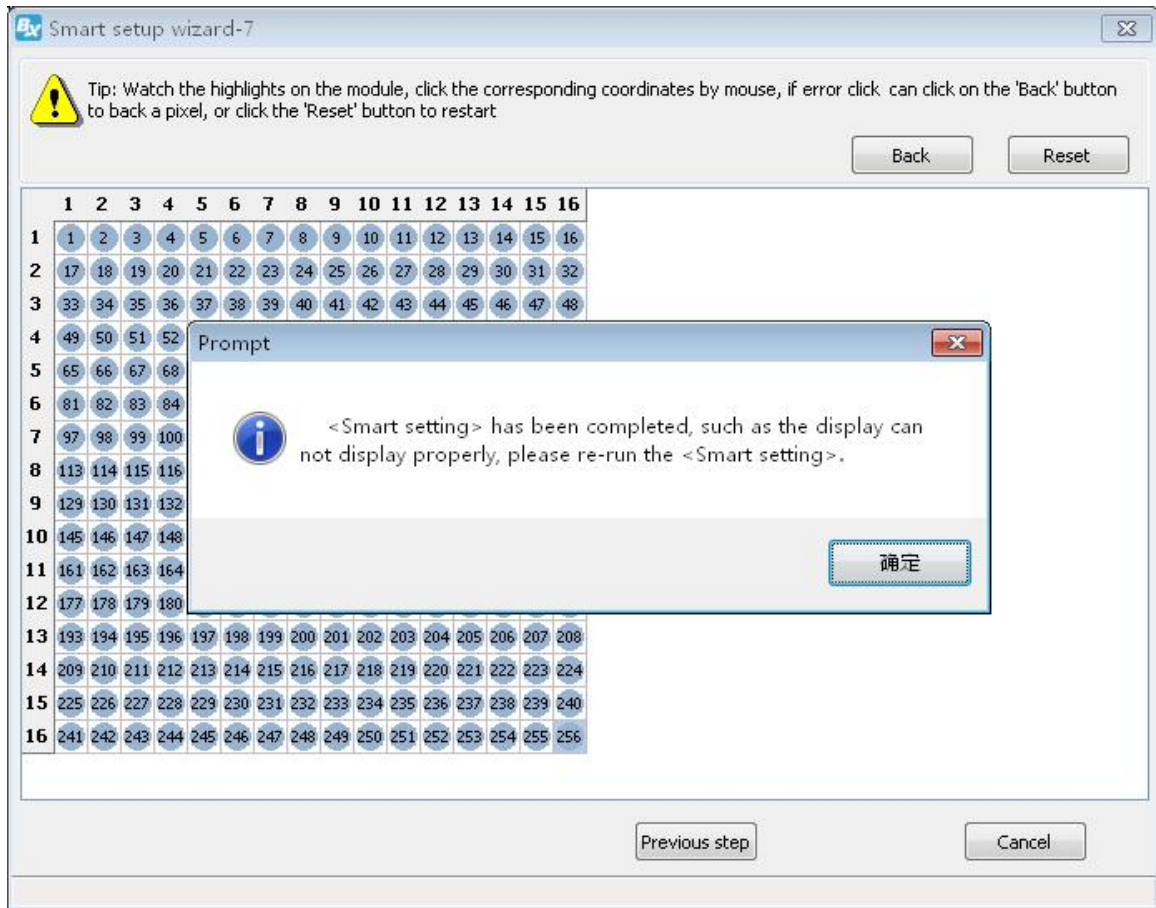
Count the LED screen lights up the number of rows ,then click "next step"



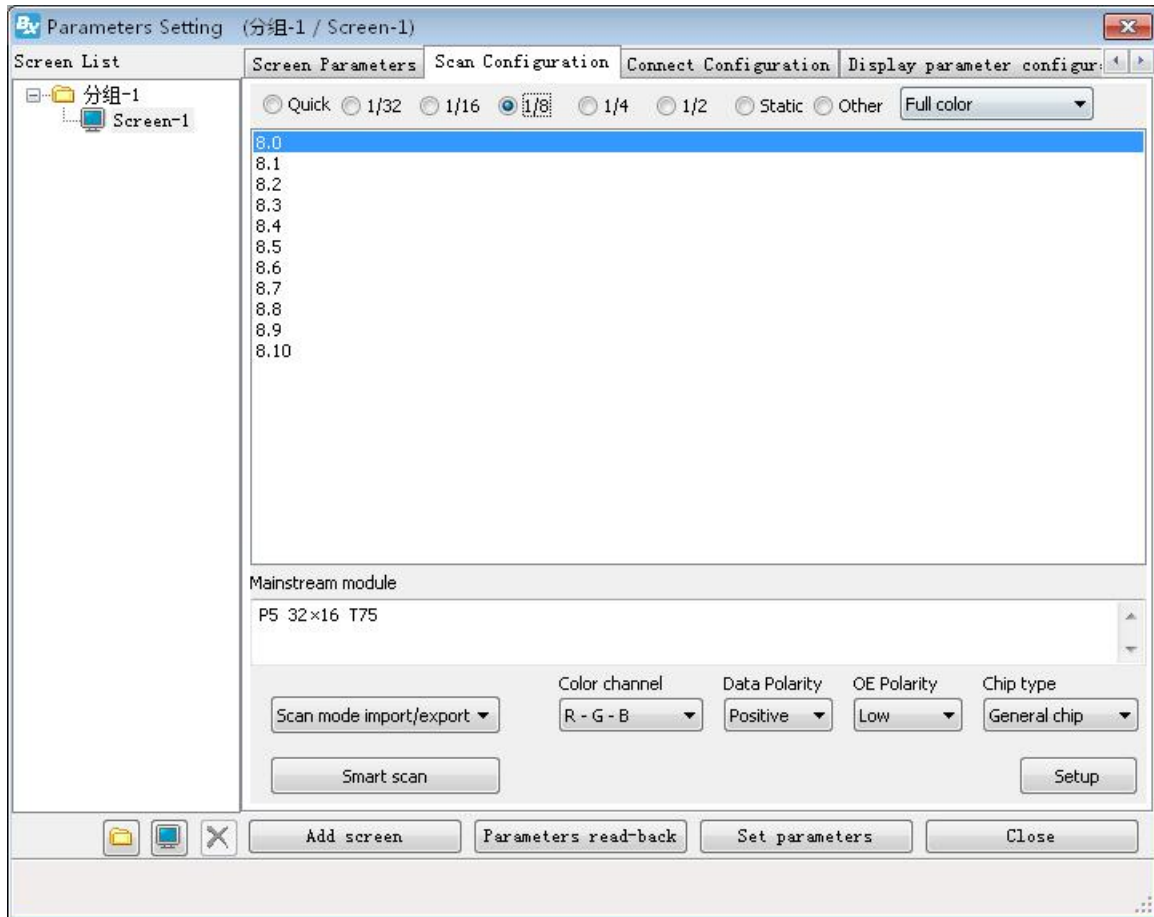
Step 7

Set the module scan mode as shown in picture ,then make coordinates as shown in picture ,click "reset" then will prompt the Picture 50.then save the scan mode .



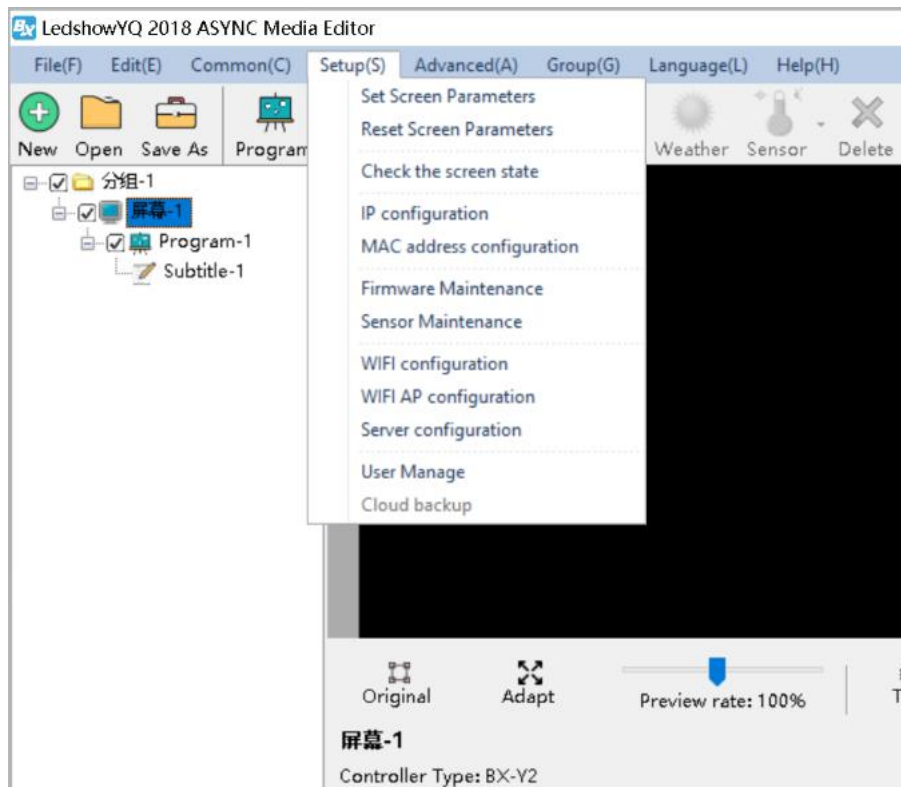


At last in the scan configuration interface will display the recommend scan mode as shown in
 picture



Reset screen parameters

Set "setup" then select the "reset the screen parameters" to set the screen parameters again.



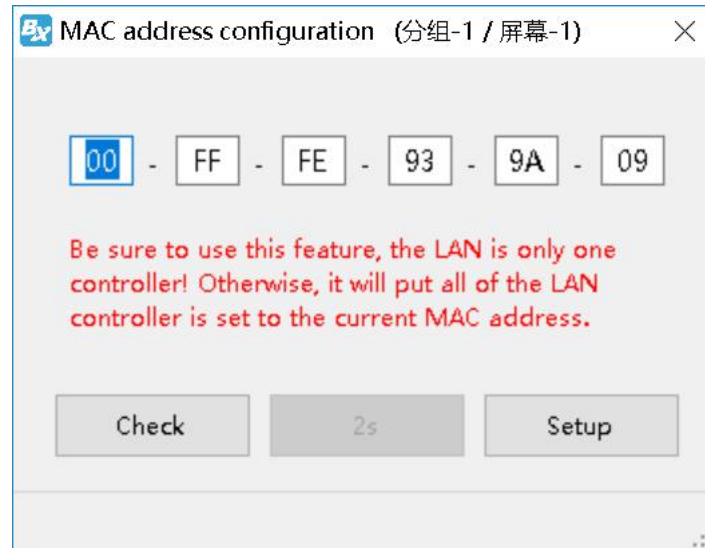
Check the screen state

Click “setup” 选择 “设置” 菜单下的 “状态查询” 功能，用户可以查看到控制器的连接状态，如下图所示：



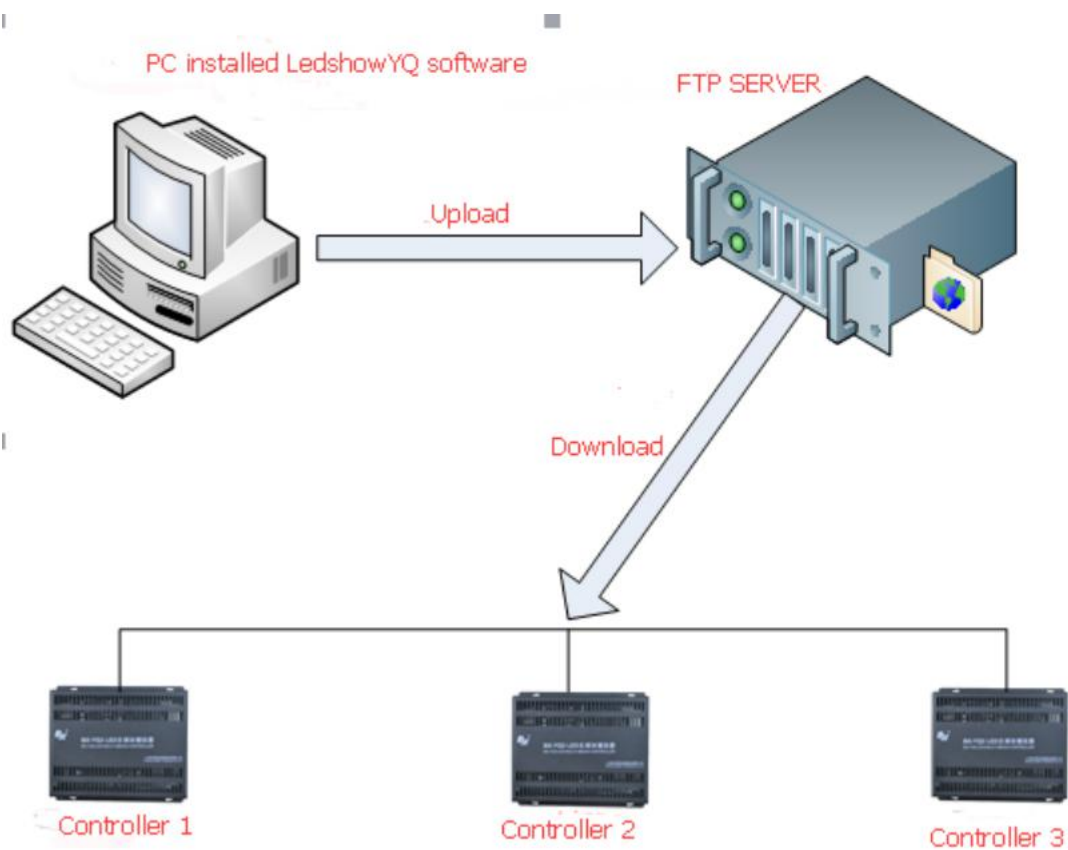
MAC configuration

Select the “MAC configuration” function ,input the password “888” then user can check or update automatically about the controller MAC address in the LAN ,then set the MAC like the follow picture:



Server /WEB communication configuration

In the medial industry ,all screens located in different cities,so in this application ,this cluster control function can be used when the screen distance is far from each other.



Preparations :

Tool name	Quantity	mark
Computer	1	
FileZilla Server software or Server-U software	1	Address : https://filezilla-project.org/download.php?type=server
Asynchronous full color controller	1	Multiple controller
Network cable	1	Based on controller quantity
3G industry router or 3G/4G modem	1	Based on controller quantity
5V power	1	Based on controller quantity
3G or 4GSIM card	1	Based on controller quantity


Steps:

Install the FTP server

There is FileZilla Server and Server-U mode ,user can select one is OK.

1. Built FileZilla Server

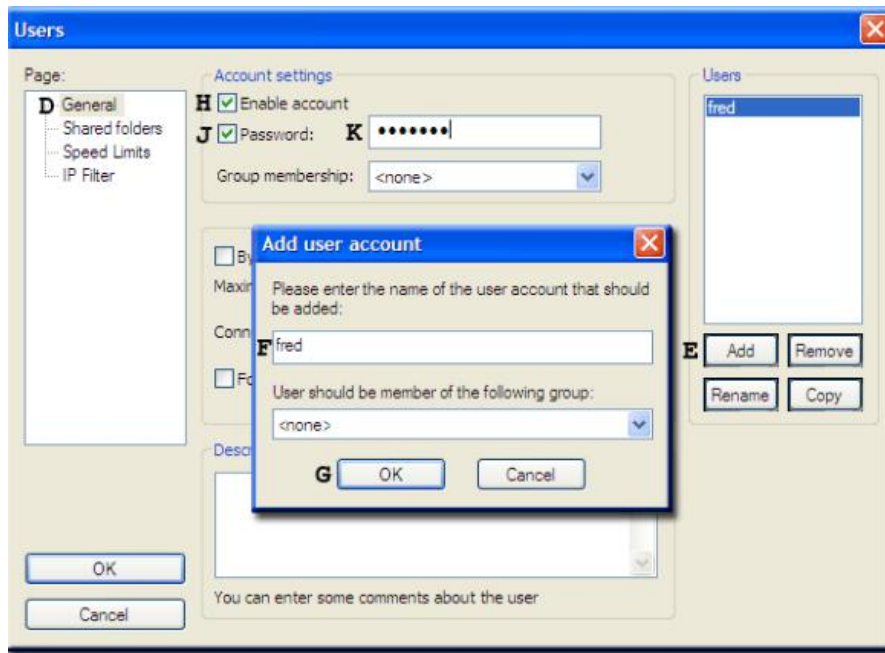
Step 1

Install FileZilla Server and then double click  to open software, IP address and port is fixed ,then only click the " OK " "



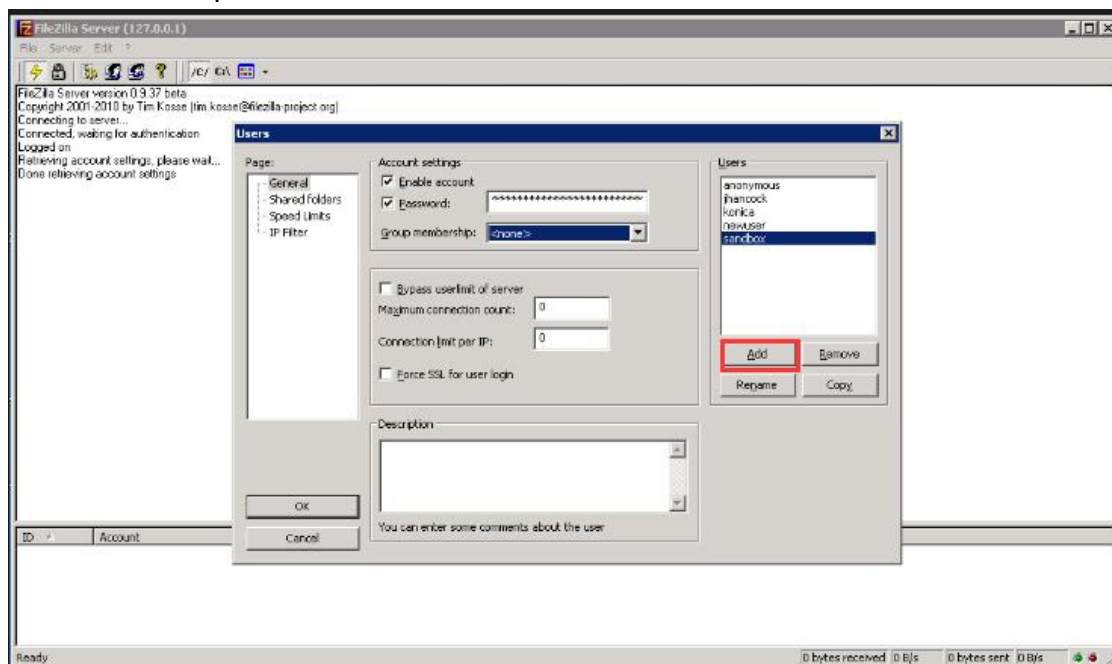
Step 2

Click the "user" selection ,then add the user as shown in picture :



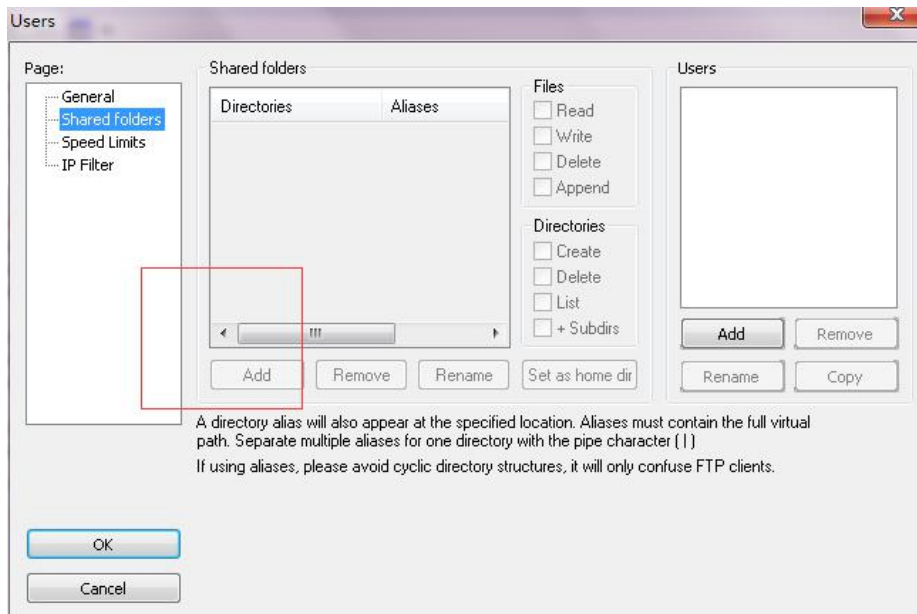
Step 3

Click add button then input the guest name and password (name and password must be "guest") as shown in picture :



Step 4

Click shares folders ,click "add" button to select one folder as shared folder ,this folder will be a connection for controller and software.as shown in picture :

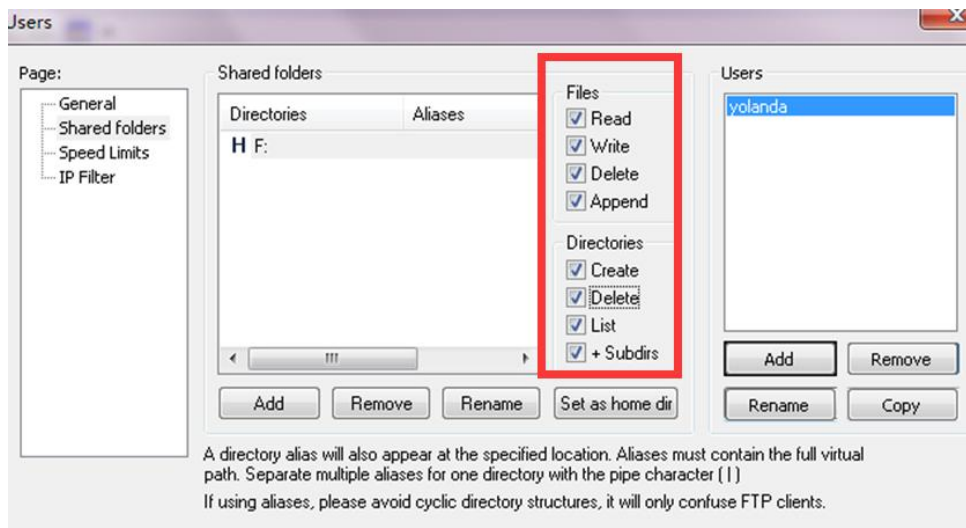


Step 5

After finish the shared folder ,users can select the catalog and set limitation to them. users should select all the functions.as shown in picture :

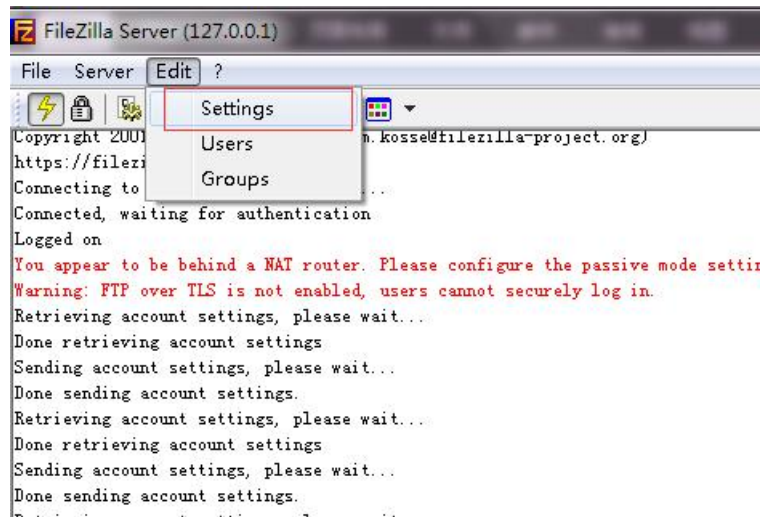
Step 6

Click the "OK" button then finish the setting, as shown in picture:



Step 7

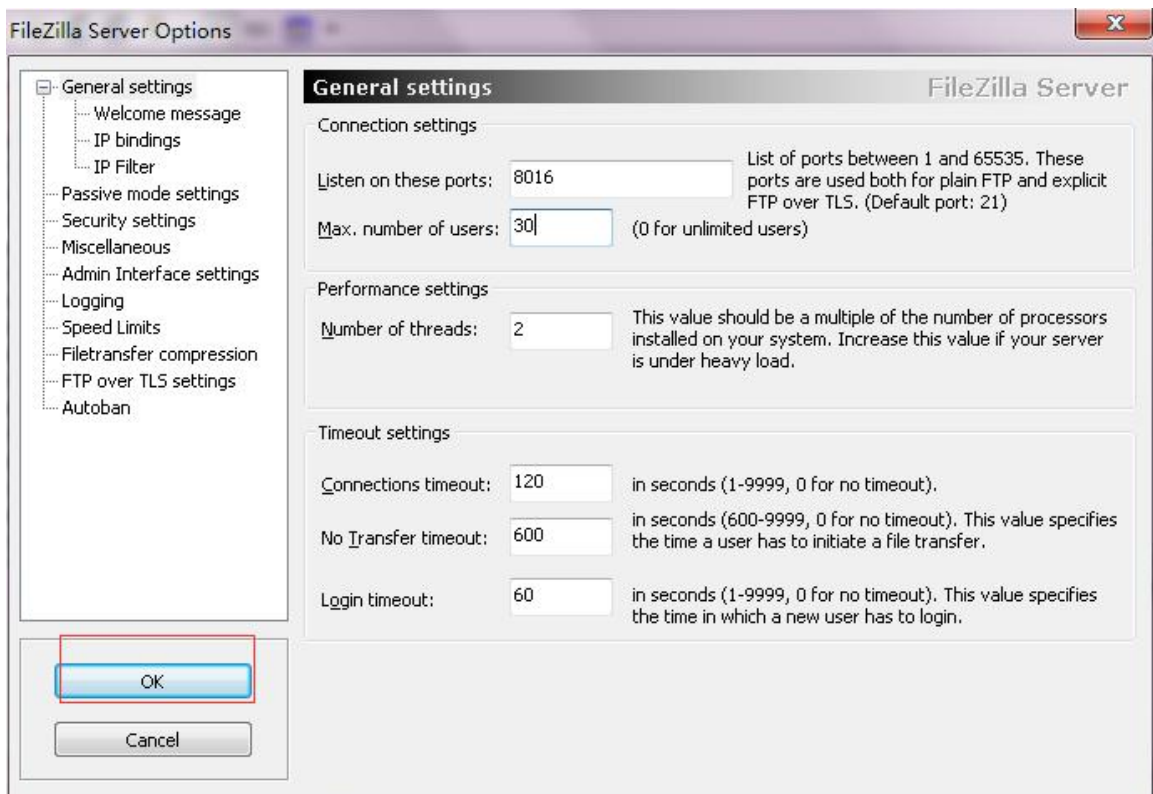
Click the edit button –settings ,as shown in picture :



Step 8

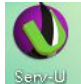
Write the listen ports, this ports is very important and will used in the YQ software, users must remember it .two conditions to write the port:

- Computer connect the network without router ,then the listen ports can write randomly(in range of 1-65535)
- Computer connect the network with router ,then write the computer IP mapping port (different router has different settings for example as shown in picture)then click the OK to confirm.



2. Built Server-U

Step 1

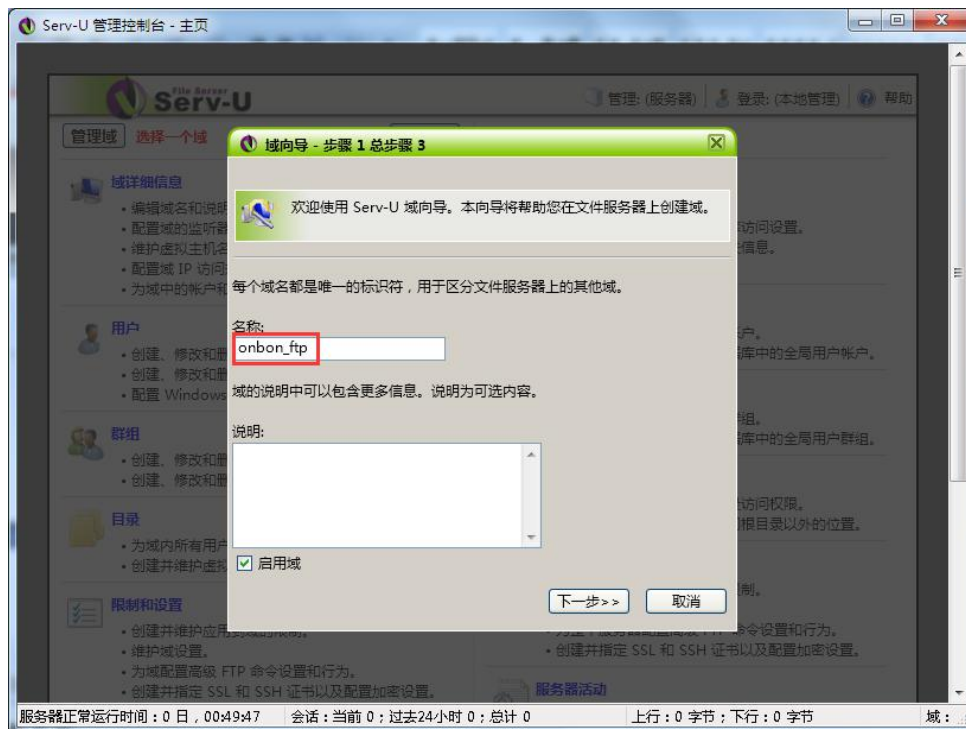
After install the Server-U, double click Picture  open software, then click "OK" as shown in picture :

:



Step 2

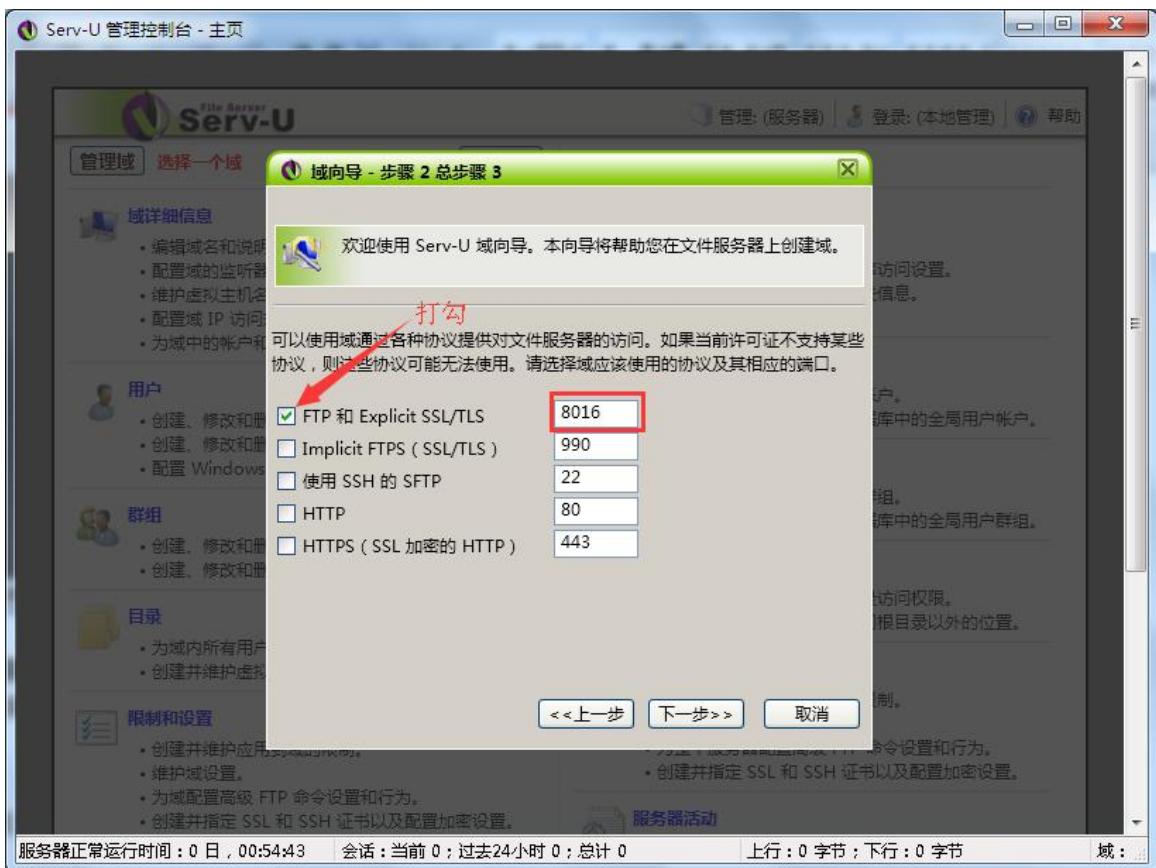
Write the name then click "next step" as shown in picture :



Step 3

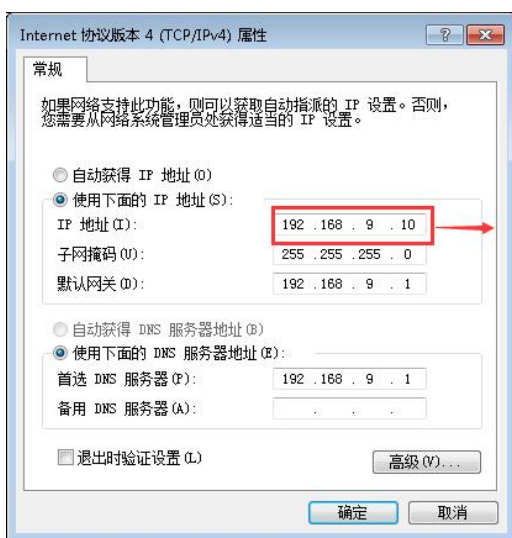
Write ftp port, Write the listen ports, this ports is very important and will used in the YQ software, users must remember it .two conditions to write the port:

- Computer connect the network without router ,then the listen ports can write randomly(in range of 1-65535) 。
- Computer connect the network with router ,then write the computer IP mapping port (different router has different settings for example as shown in picture)then click the OK to confirm



Step 4

Input computer IP as shown in picture .



Step 5

Click "YES" to add new user, as shown in picture .



第 6 步

Click "YES" as shown in picture



Step 7

Write the user name as guest (User name must be guest) then click "next step", as shown in picture.



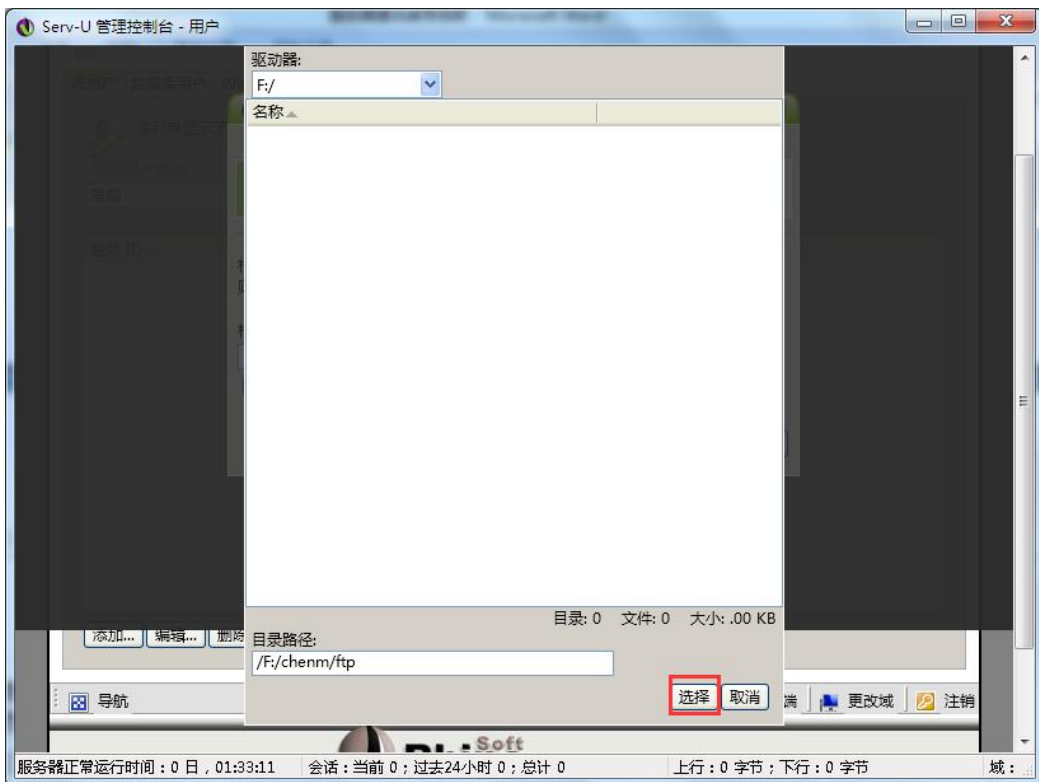
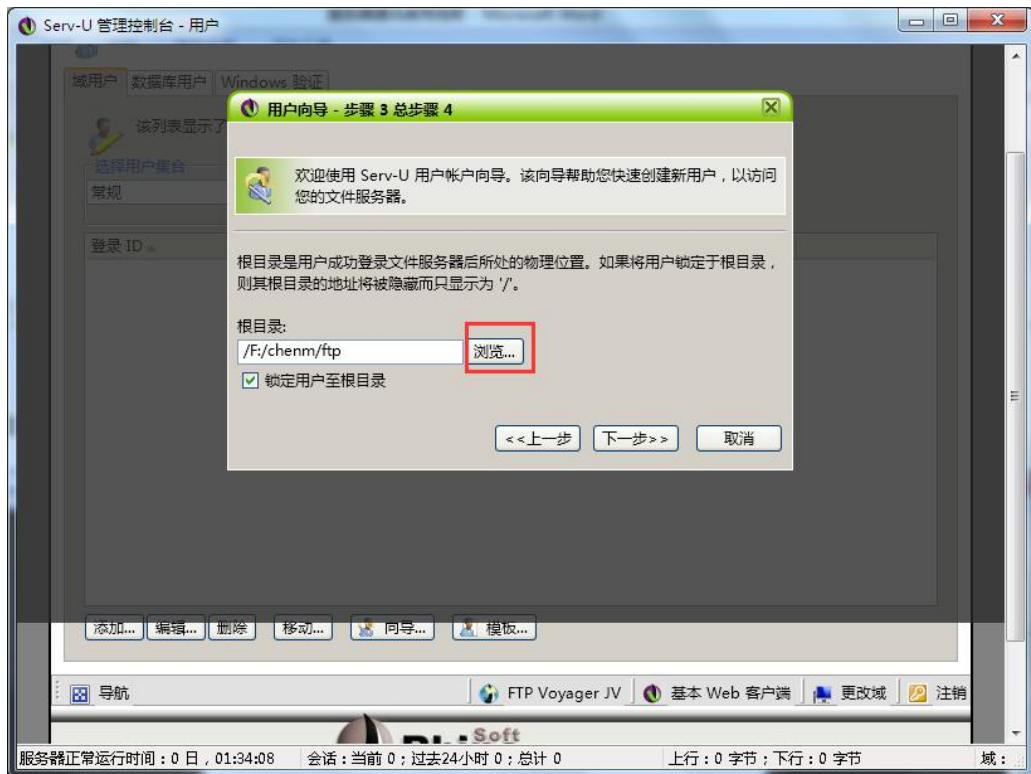
Step 8

the password also must be guest (password must be guest), then click "next step" as shown in picture.



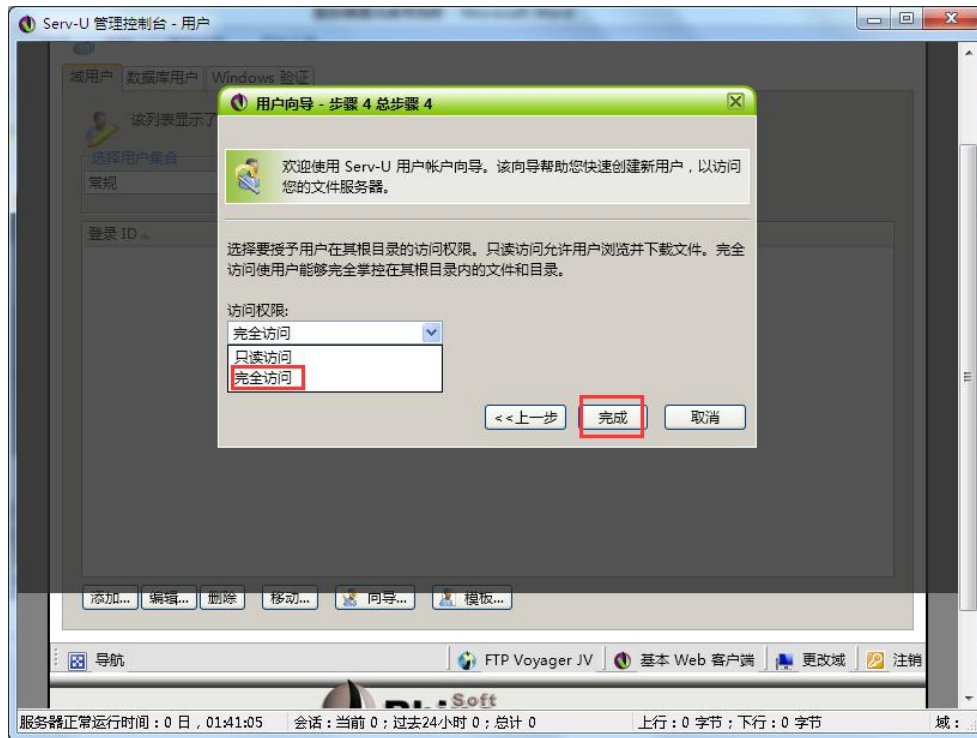
Step 9

Click the button "browse" to add the root directory as shown in the picture ,click "select"then --"next step"will be OK.



Step 10

At last select " fully visit" as shown in the picture then click " finish"



Set controller IP information

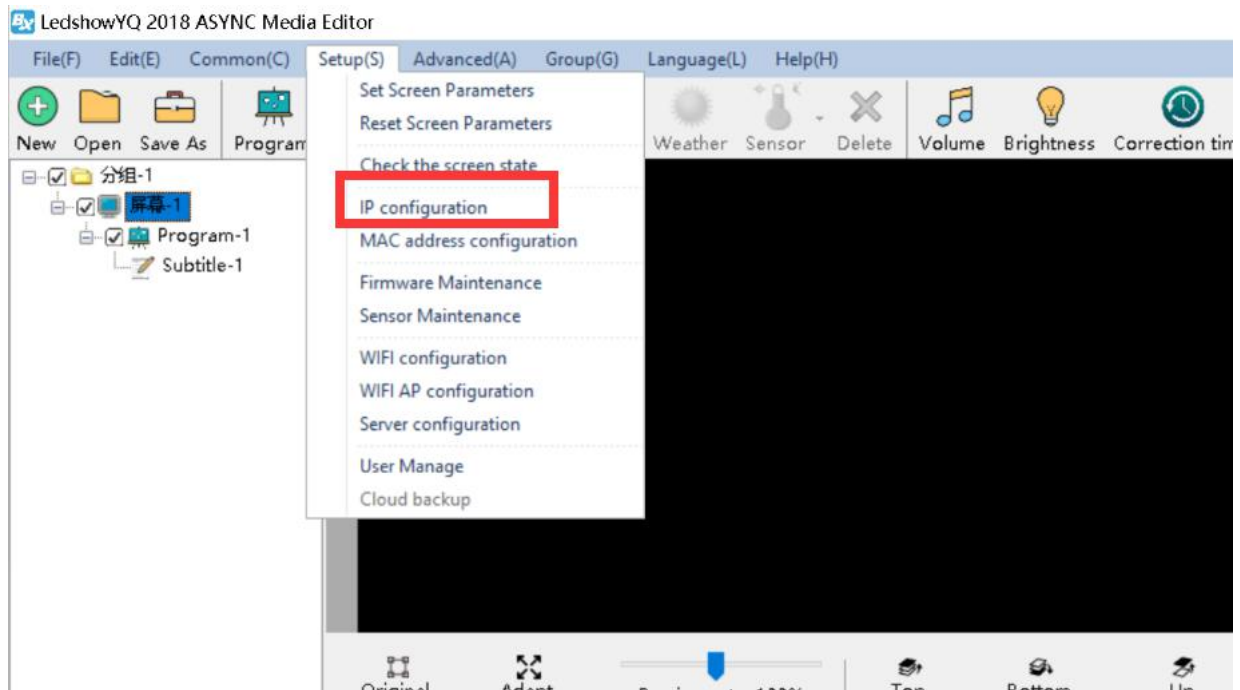
Step 1

Controller connect with 5V power, connect the computer and controller with one network cable, as shown in picture .



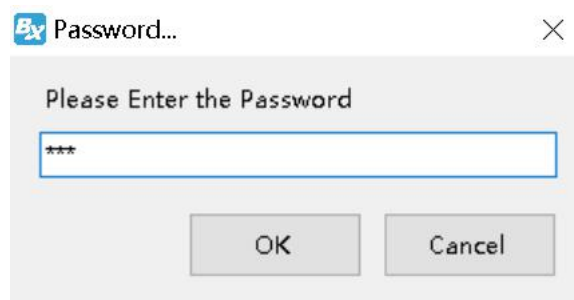
Step 2

Click LedshowYQ 2018, click "setup" -- "" IP configuration" , as shown in picture .



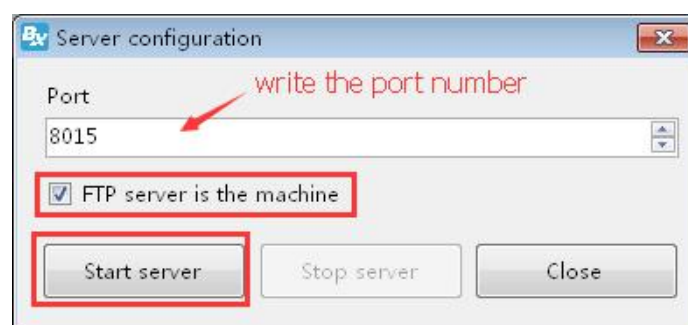
Step 3

Input "888" , click" OK" , as shown in picture .



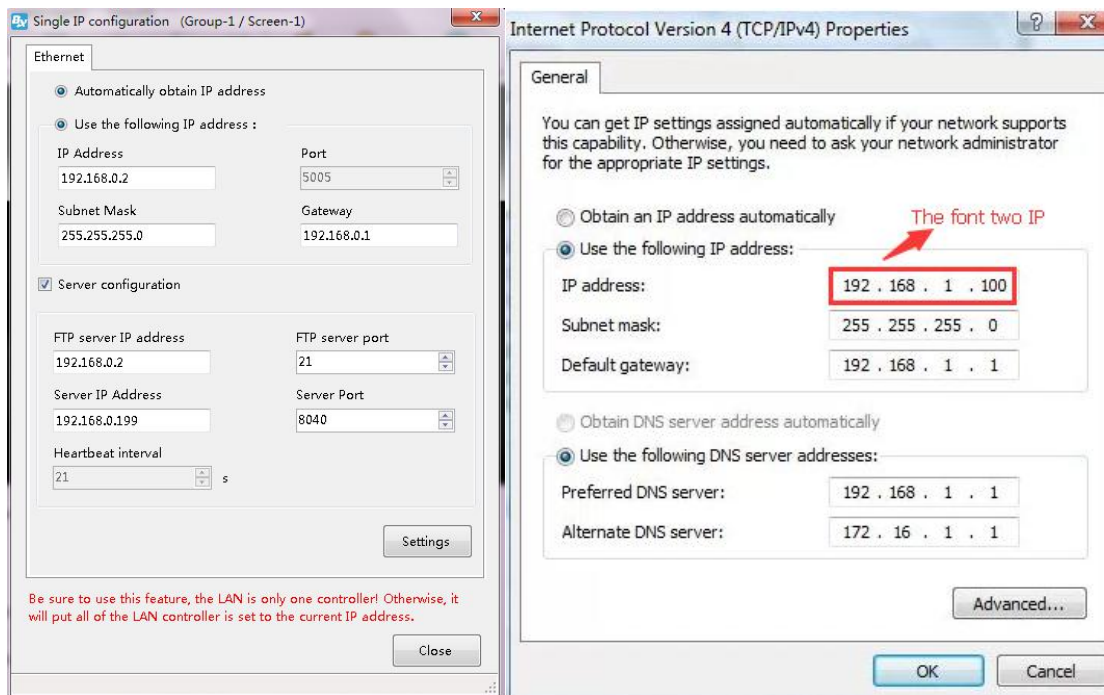
Step 4

Firstly fill the server port number in the server configuration interface ,this port number is the monitor port number which mention when used for built the FTP. (in the step 8 when built FileZilla Server can check the port number or in the step 3 when built server-U also can check this port number) , pls select the FTP server is in this computer if the server is really in this computer ,then click "start the server" as shown in picture .



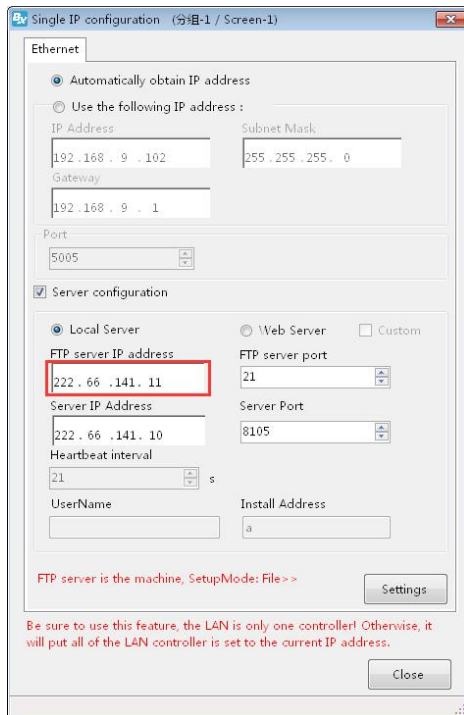
Step 5

In the IP configuration interface ,firstly input the IP address ,the first two number of the IP should be same as the computer IP front two numbers.the third number is the 3G router default network segment 1 ,the last number is any number(value is from 1 to 255), the first three number of the gateway should be same as the first three number of the controller IP ,the last is 1 (if connect to the 4G router,IP and gateway can be any value)as shown in picture



Step 6

How to Write the FTP server IP ?this ip is the computer public ip which users used for built the FTP server, users can check from www.ip138.com by input" network ip) if other country need use google is also ok.as shown in picture



Step 7

Then press "set" button, after 10 seconds, it will show ip setting successfully, as shown in picture .

Controller connect to the wireless route

After set the controller IP, we should remove the computer network cable, then connect with router. usually we use two kinds of router, 3G industrial wireless router and 3G/4G industrial router, users can set according to different router model.

1. Connect the 3G industrial wireless router

Step 1

Insert the SIM card to 3G wireless industrial router, connect the receiver then use 5V power to connect with the router, as shown in picture .



Step 2

Network cable connect the controller and router , as shown in picture .



2. Connect to the BX-4G(U)

Step 1

Insert the sim card to BX_4G(U), after connect the controller ,connect the 5V to router,as shown in picture

Step 2

USB cable to connect the router and controller (attention: after controller connect with the server, the yellow light is fast blinking /200ms; if controller didn't connect with the server, the 4G router is online ,then the yellow light is slowly blinking /2s)as shown in picture .



Step 3

After controller connect with the 3G/4G industrial router ,if u use the router for network , should check if the router have the" NetSniper" function or not ,must close the NetSniper function ,if not ,the controller can't communicate successfully.as shown in picture .

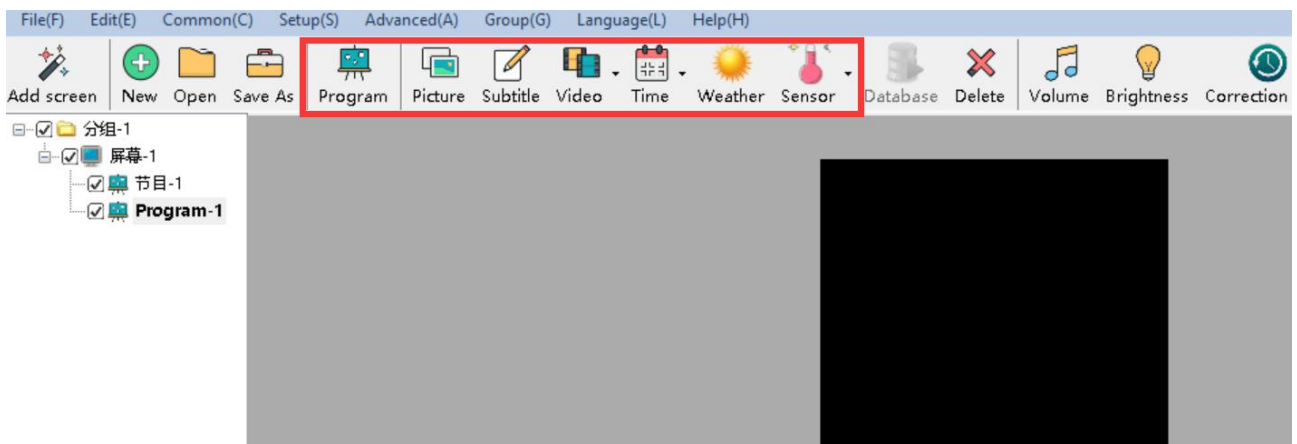


ADD PROGRAMS

Add program

1. Add program

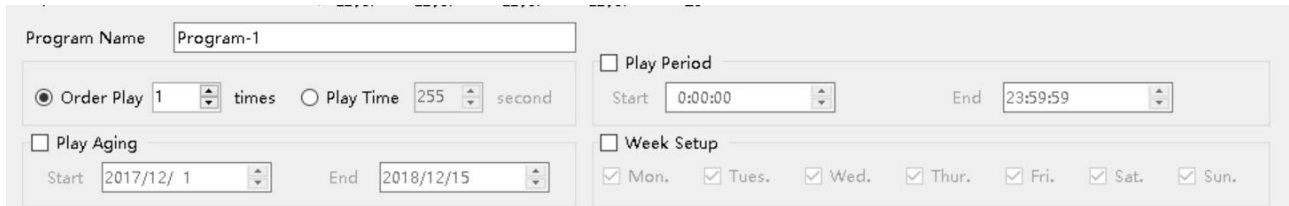
Add area then add program ,user can add program ,picture ,subtitle ,video,time ,weather or sensor and database area, as shown in picture :



- **Picture zone**: add and play video,picture ,text,table、 txt、 word、 excel、 flash、 gif etc.
- Subtitle zone: add one line simply format word

- Video zone: add all series video format,support HDMI video and outer video signage like:camera,TV card ,DVD machine ect.
- Time zone: display time/dial/lunar/ timer count up/timer count down
- **Weather zone:** support all area weather value
- Sensor zone: display temp、 humidity, noisy , water , liquid and other sensor value.

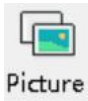
2. Program attribute



- Program name: edit program name
- Orderly play: after play this program ,then turn to next program
- Play time: set play time ,after this time setting ,then turn to next program
- Play aging: play program during the setup time.
- Play period: play program during the start time and end time.
- Week setup: play program during the setup week

Add picture zone

1. Add picture zone



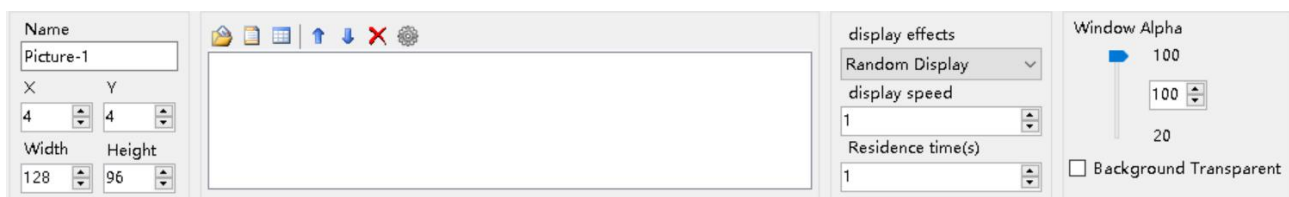
Add **Picture** zone ,user can click “edit”in the menu to add picture zone also .after add the picture zone ,add file to display as shown in picture , after add picture ,the LED screen and preview area will display at same time ,then user can modify the program as needed.

User can use the tools to modify the picture size and location.



2. Picture zone attribute

All picture attribute as shown in picture



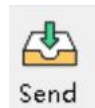
-
- name: user can distinguish file name by this ,can modify by manual.
 - X: file left up corner to the LED screen left boarder location ,unit is pixel.
 - Y: file left up corner to the LED screen up boarder location ,unit is pixel.
 - Width: file area width ,unit is pixel
 - Height : file area height ,unit is pixel
 - Display effects: default is random,the display effect :quick type,static display,continuously move up /move down/move left/move right,push up ,push down and so on.
 - Display speed : display speed is from 1-16, 1 is fastest.
 -
 - Residence time: stay time from1s-128s,1s is the shortest time.
 - Window alpha: File area alpha from 20%-100%, 100% is opacity
 -
 - Background transparent: select here ,the background will be transparent

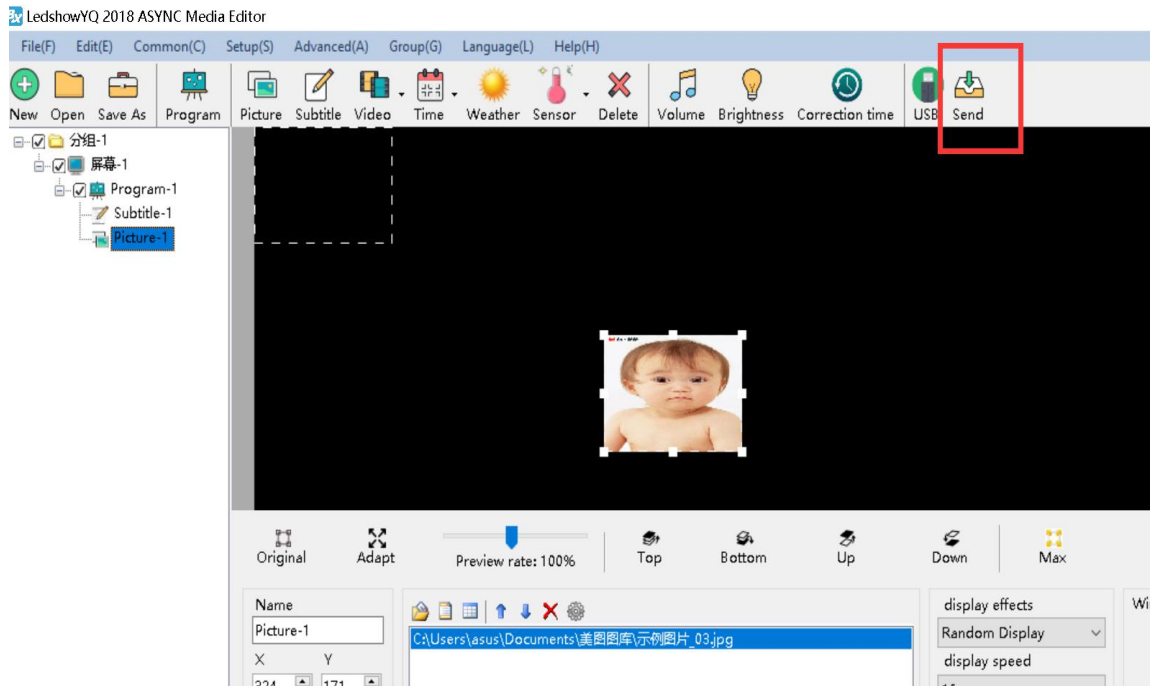
Finish edit program

After the up steps ,if want to add other program ,just follow the same steps is ok ,after finish the edit program ,pls remember to save into the DISK,click menu--save play files.

Play program




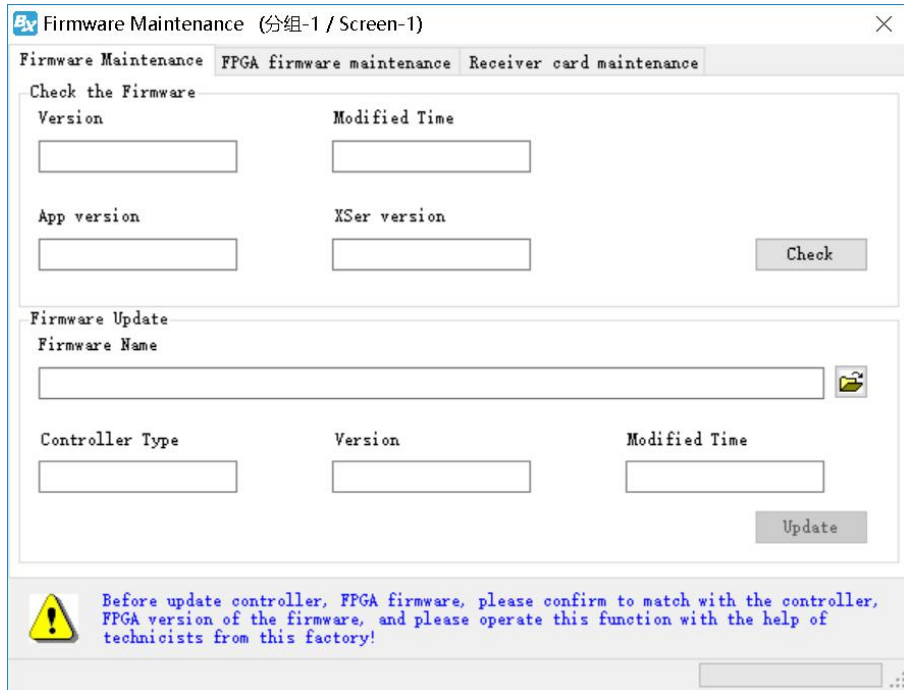
If want to display the current program,click  , then the preview window and screen will display program at same time ,if want to play different program file,open the program file and play is OK.




Firmware maintenance

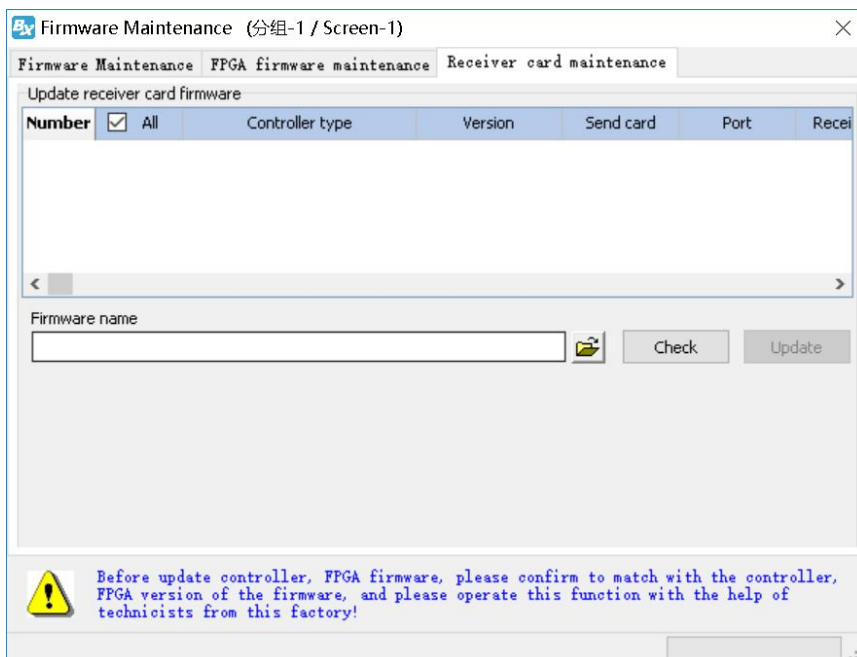
Firmware maintenance

To make sure the controller software version is compatible with LedshowYQ software, user can maintenance controller firmware firstly, in the "setup" -- "firmware maintenance" input password "888", as shown in picture. click "check" to find the connected controller, then click  to update controller firmware, then click "update".



Receiver card firmware maintenance

To make sure the controller software version is compatible with receiving card, user can maintenance receiver card firmware firstly ,in the “setup” --“ firmware maintenance” --“ receiver card maintenance” , as shown in picture .click “check” to find the connected controller ,then click  to update receiver card firmware ,then click “update” .



COMMON FUNCTION

Time correction

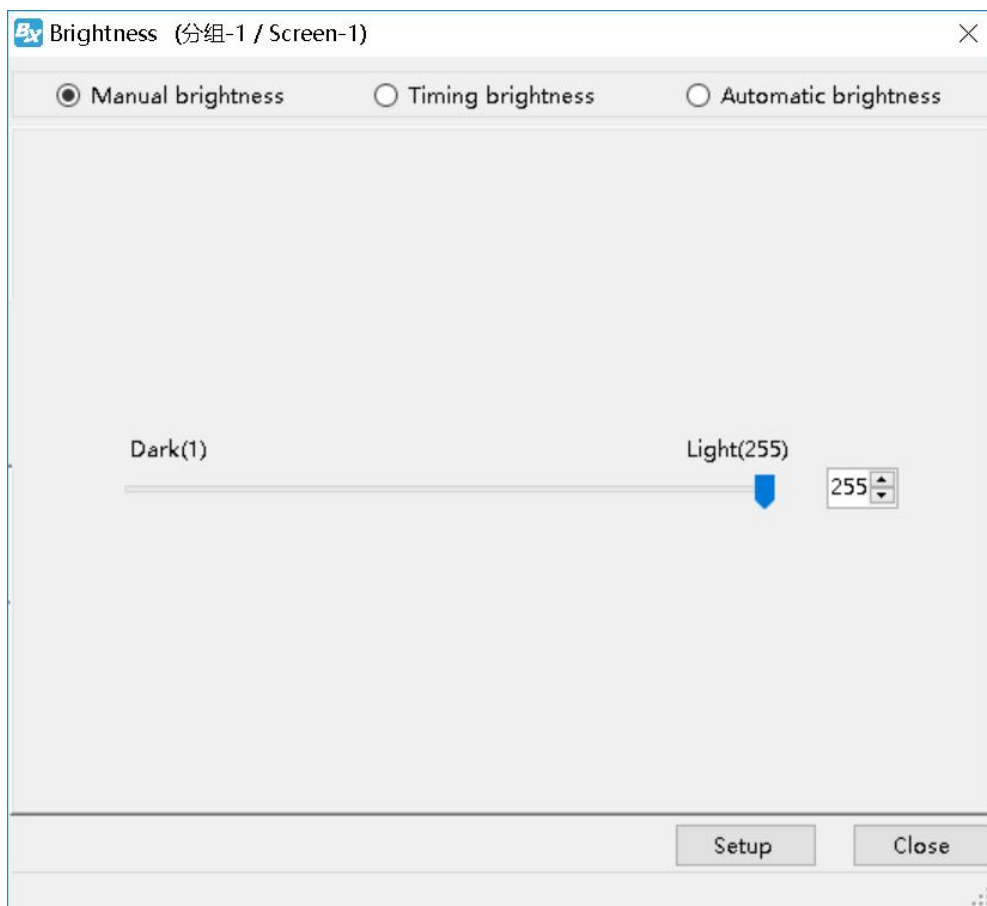


Click **Correction time**, or user can use the "common" menu and select "correction time" to correct time for the controller time and chip .

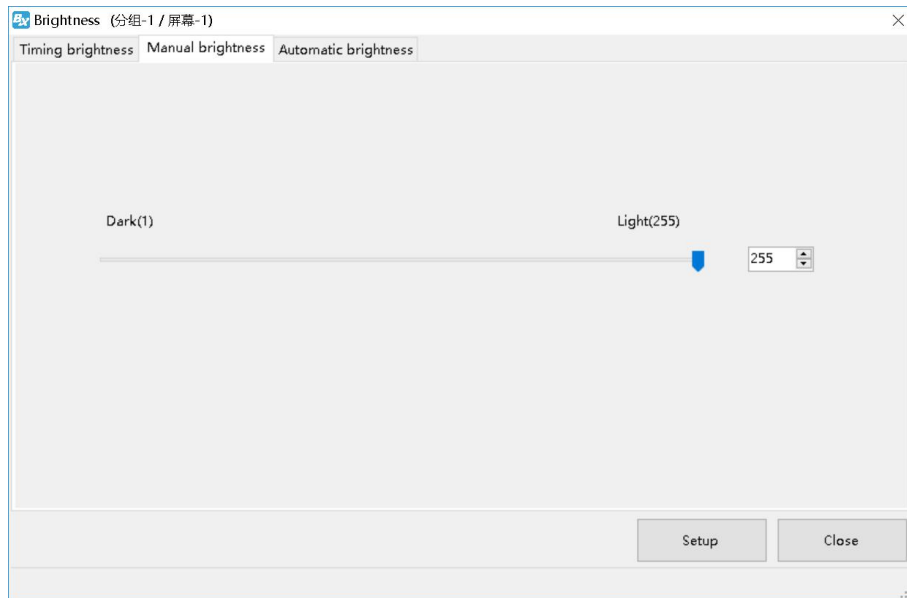
Brightness



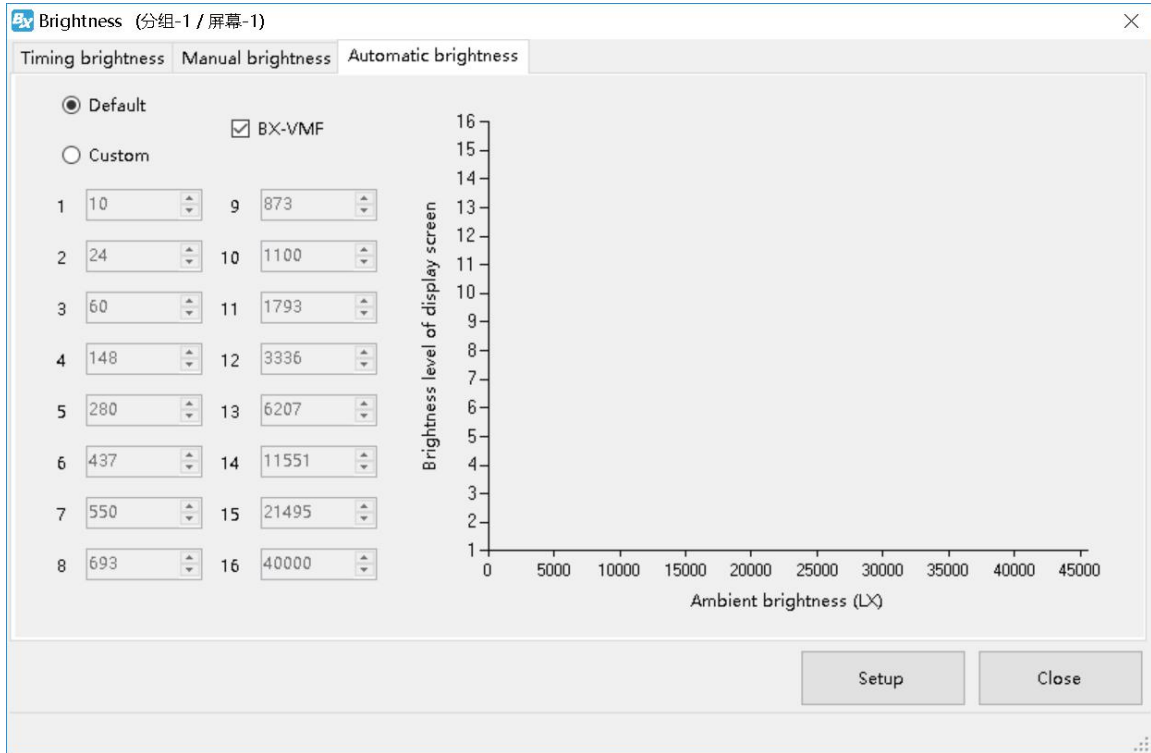
Click **Brightness**, user also can use the "common" in the menu to select "brightness" function



1. **Manual brightness:** manual drag the value rule then click" setup" to adjust the brightness.




Automatic brightness: after user connect with the sensor ,pls select "BX-VMF" , as shown in picture 125, brightness value can be default or customized ,at last pls select "setup" screen brightness will be changed according to environment temperature brightness.



Volume



Click  or user can change the volume from the menu --"common"--"volume"

Turn on

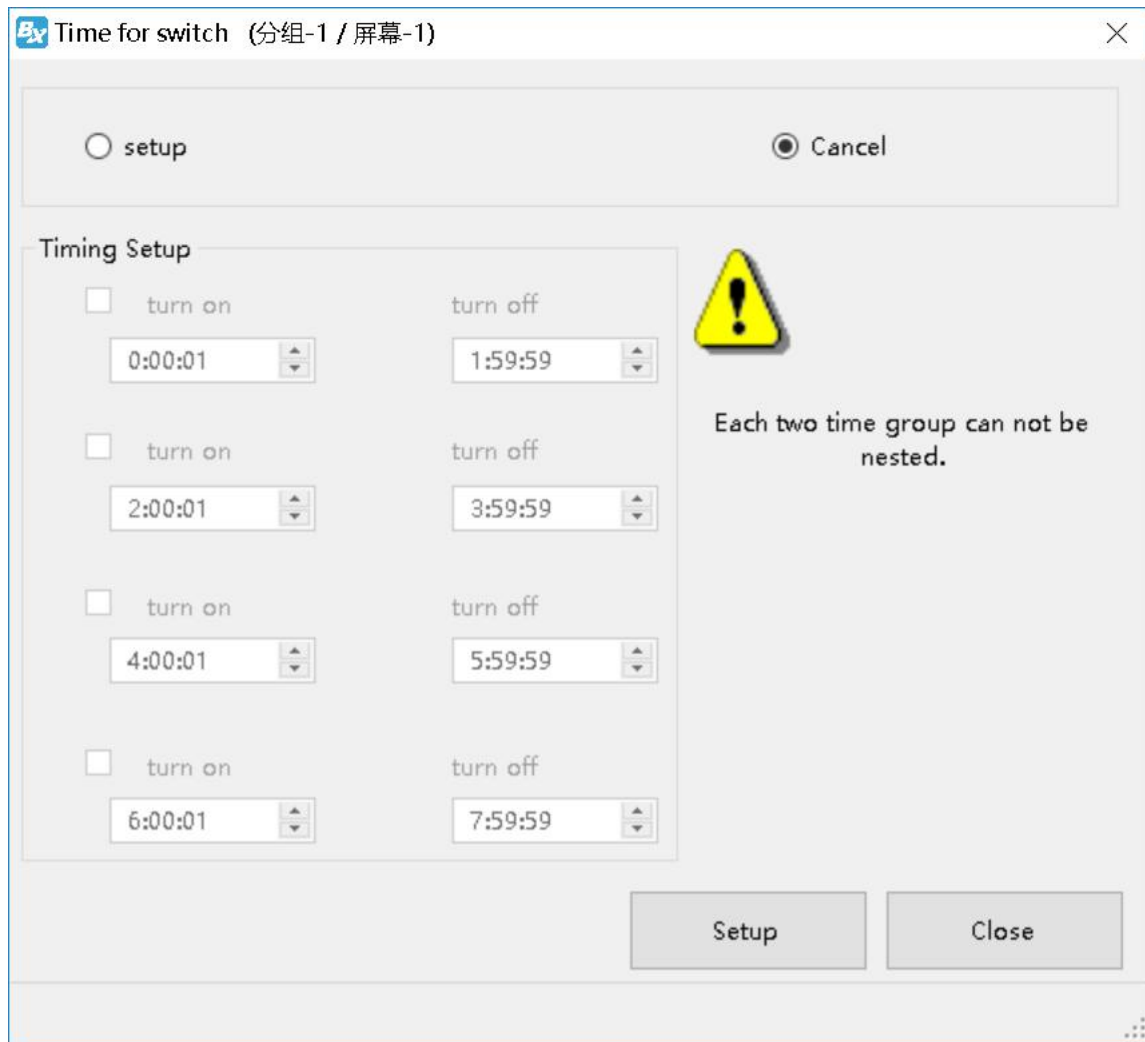
User can use the common--" turn on" to start the screen.

Turn off

User can use the common--" turn off" to close the screen.

Timer for switch

User can use the "common" function--" timer for switch" to set the turn on&off time ,as shown in picture.




Switch the storage medium

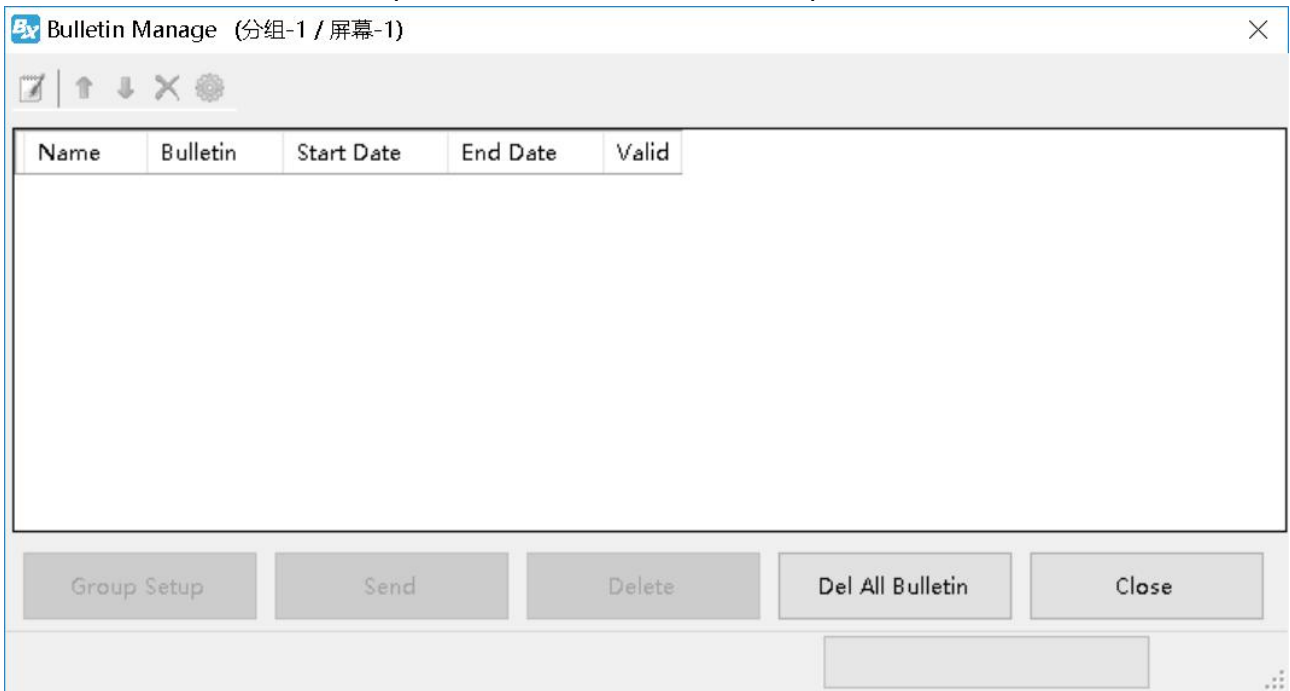
User can use the "common" --" switch the storage medium" to save the program to SD card or U disk or internal memory.

ADVANCED

Bulletin management

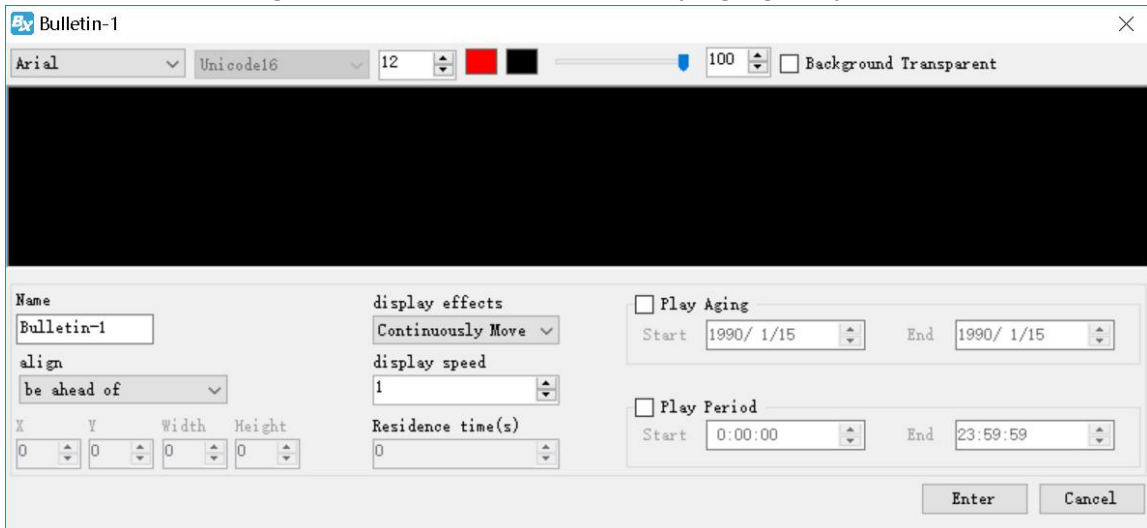
1. Bulletin management

Click "advanced" --" bulletin management" --input password" 888" ,as shown in picture .click  , as shown in picture



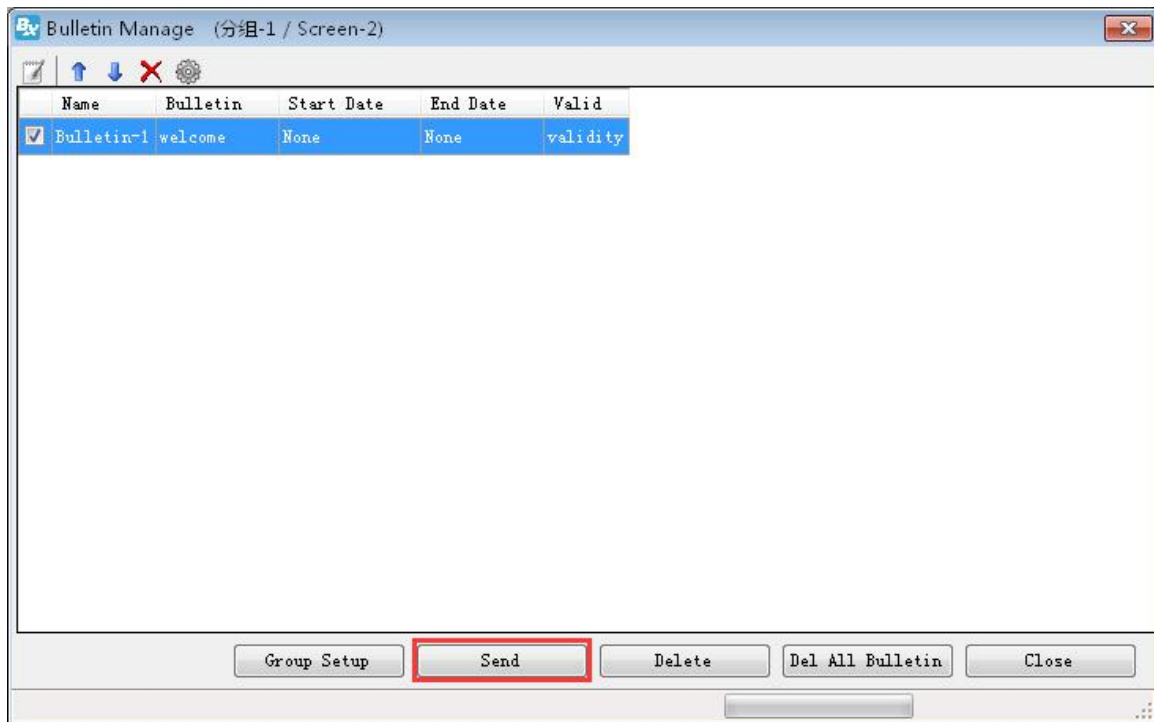
2. Bulletin attribute

In the bulletin attribute area can set the display location,running speed ,stay time ,font size,font color ,background color ,alpha or not ,play aging ,play period and so on.



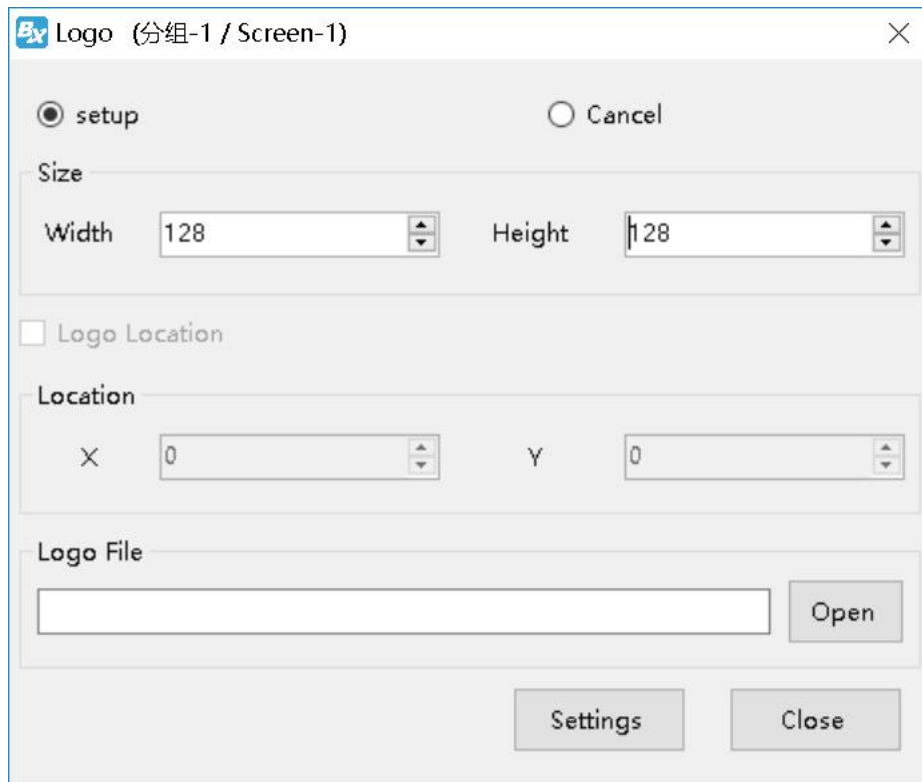
3. Play /delete bulletin

After set all information then click "sending" to play bulletin ,or click "delete" to delete the bulletin.



Logo Configuration

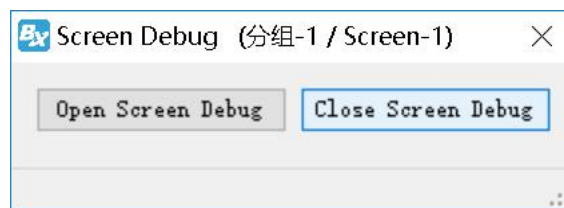
Click "advanced" then start "start Logo configuration", log into the logo configuration as shown in picture. user can set the logo width ,length and coordinate location.



Screen debug

LED debug is mainly for fix the screen easily ,in the corner" LED" display can select open and close.

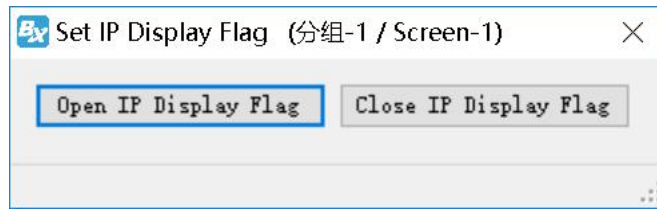
Click "advanced" --" Screen debug" then turn to the LED screen debug as shown in picture . user can select open or close screen debug.



Set IP display flag

IP flag means when there is no program in the controller ,the screen will display "pls add program "controller model ,parameter ,IP etc . the IP display or not depend on the IP flag.

Click the "advanced" menu ,in the display list ,pls select "display IP flag" as shown in picture .



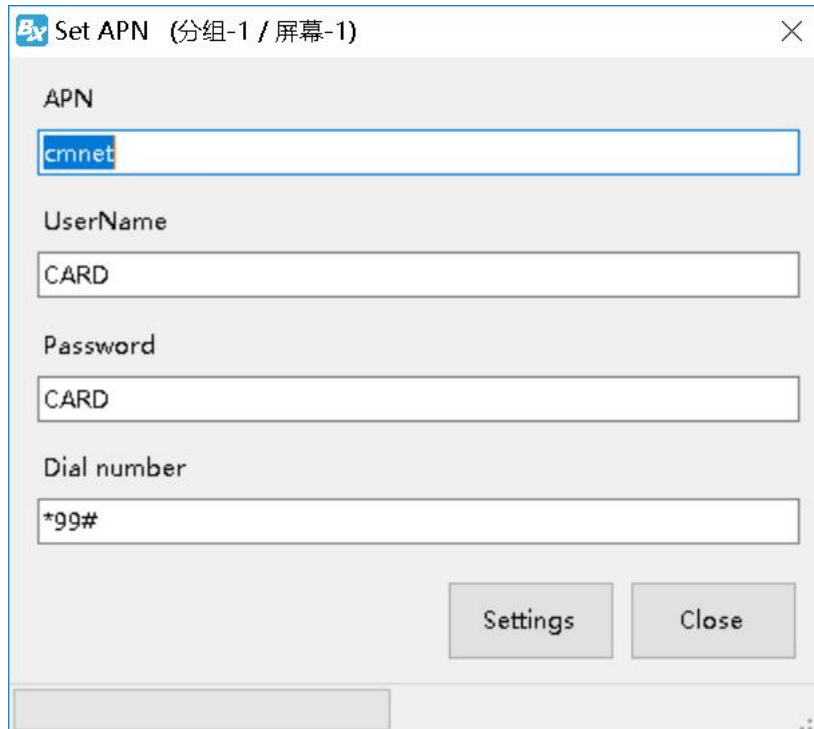
Set time zone server

In the menu of "advanced" --" set time zone server" as shown in picture



Set APN

Click the "advanced" then select the set APN menu as shown in the picture ,then fill up the user name ,password ,dial number and APN name then click the "settings"to finish the setup task.



Contact Us

Shanghai ONBON Technology Inc. (Headquarters)

Address: 7 Floor, Tower 88, 1199#, North Qinzhou Road, Xuhui District, Shanghai City, China

Tel Phone: 086-21-64955136

Fax: 086-21-64955136

Website: www.onbonbx.com

ONBON (Jiangsu) Optoelectronic Industrial Co.,LTD

Address: 1299#, Fuchun Jiang Road, Kunshan City, Jiangsu Province, China

Sales Contacts

Tel: 0086-15921814956 0086-15800379719

Email: onbon@onbonbx.com

Second Development

Tel: 0512-66589212

Email: dev@onbonbx.com

iLEDCloud

Website: <http://www.iledcloud.com/>



Public wechat